



GREATER HELENA MPO | TTAC  
 October 20, 2025

Zoom Online Meeting: <https://us06web.zoom.us/j/85336314391>  
 (City/County Building Room 226)

**Call to Order**

**Roll Call**

**Public Comment on the Agenda / General Public Comment**

- A. Comment in person.
- B. Comment online.

<b>1. <u>INFORMATIONAL ITEMS</u></b>	<u>Presenter</u>	<u>Time allotted</u>
<input type="checkbox"/> <b>Long Range Transportation Plan Project Update</b>	Scott Randall (RPA)	3:00 – 3:20
<input type="checkbox"/> <b>Focus Areas for the Comprehensive Safety Action Plan</b>	Scott Randall (RPA)	3:20 – 3:45
<b>2. <u>ACTION ITEMS</u></b>	<u>Presenter</u>	<u>Time allotted</u>
<input type="checkbox"/> <b>Transportation Alternative (TA) Funds</b>	Ty Weingartner (MPO) Manager	3:45 – 4:15
<ul style="list-style-type: none"> <li>• The committee will consider the proposal for the allocation of Transportation Alternative Funds as recommended by the Scoring Subcommittee.               <ul style="list-style-type: none"> <li>○ Supporting Documents                   <ul style="list-style-type: none"> <li>▪ Transportation Alternative Memorandum</li> <li>▪ Transportation Scoring Summary</li> </ul> </li> </ul> </li> </ul>		

**Member Communications and Discussion Topics**

**Adjournment**

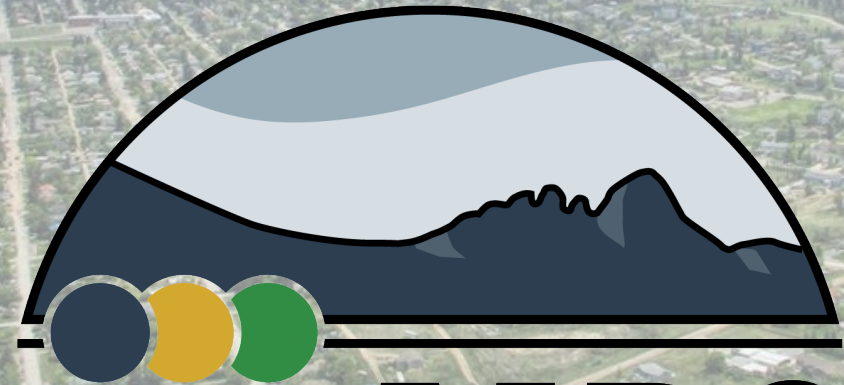
It is the policy of the Greater Helena MPO to take public comment on any action item. For further information on any of the items mentioned above, please contact the MPO Manager at 447-8406 or [tweingartner@helenamt.gov](mailto:tweingartner@helenamt.gov).

The MPO is committed to providing access to persons with disabilities for its meetings, in compliance

with Title II of the Americans with Disabilities Act and the Montana Human Rights Act. The MPO will not exclude persons with disabilities from participation at its meetings or otherwise deny them the City's services, programs, or activities. Persons with disabilities requiring accommodations to participate in the MPO's meetings, services, programs, or activities should contact the City's ADA Coordinator, Anne Pichette, as soon as possible to allow sufficient time to arrange for the requested accommodation, at any of the following: Phone: (406) 447- 8490 TTY Relay Service 1-800-253-4091 or 711 Email: [citycommunitydevelopment@helenamt.gov](mailto:citycommunitydevelopment@helenamt.gov) Mailing Address & Physical Location: 316 North Park Avenue, Room 445, Helena, MT 59623.

# Transportation Technical Advisory Committee Members

Resource Name	Title	Voting Member
David Knoepke	City of Helena Transportation Systems Director	Yes
Chris Brink	City of Helena Community Development Director	Yes
Kevin Ore	City of East Helena Public Works Director	Yes
Jeremy Fadness	City of East Helena Planning Staff (ask Kevin Ore)	Yes
Jenny Chambers	Lewis and Clark County Public Works Director	Yes
Greg McNally	Lewis and Clark County Community Development and Planning Director	Yes
Chris Couey	City of Helena Transit Manager (Proxy)	Yes
Ellie Ray	City of Helena Americans with Disabilities Act (ADA) Coordinator	Yes
Dick Sloan	Non-Motorized Advocate at Large (TTAC will have to put out applications)	Yes
Geoff Streeter	Montana Department of Transportation (MDT) Statewide & Urban Planning Planner	Yes
James Combs	MDT Great Falls District Preconstruction Engineer	Yes
Rex Weltz	Helena Public Schools District No. 1 Superintendent	Yes
Dan Rispens	East Helena Public Schools District No. 9 Superintendent	Yes
Drenda Niemann	City-County Public Health Officer	No
Jeff Wadekamper	Helena Regional Airport Director	No
Brett Petty	Helena Police Chief	No
Clint Loss	Lewis and Clark Rural Fire Council Chair	No
Katie Potts	Federal Highway Administration (FHWA) Division, Statewide and Urban Planner	No
Emma Belmont	Federal Transit Administration (FTA) Region 8 Transportation Program Specialist	No
Harry Barnett	MDT Division Maintenance Chief	No



Greater  
**Helena MPO**

Metropolitan Planning Organization

**TTAC Meeting**

**OCTOBER 20, 2025**

# Agenda



Public & Stakeholder Outreach



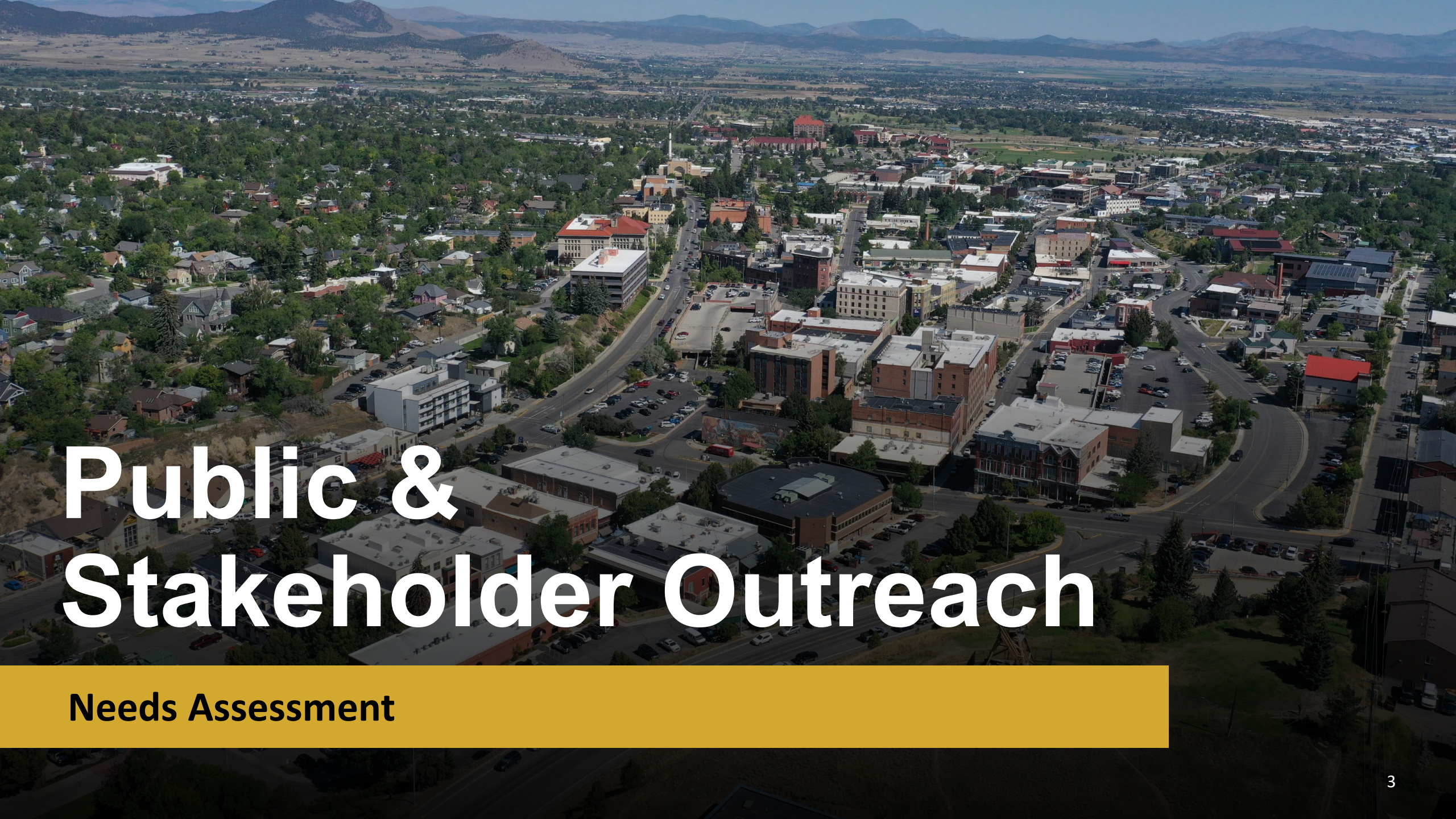
Existing Conditions



Safety



Schedule & Next Steps



# Public & Stakeholder Outreach

Needs Assessment

# Public Participation Plan



## Public Participation Plan

September 24, 2025

- Adopted by TPCC at 10/9 meeting
- Pending FHWA Approval

# Public Outreach – Needs Assessment

- **Purpose**

- Gather **broad community input** about the future of the transportation system.
- Understand community **values, travel behaviors, and priorities.**
- Focus on **long-term aspirations** rather than specific problem-solving.



Virtual Open House (30 days)



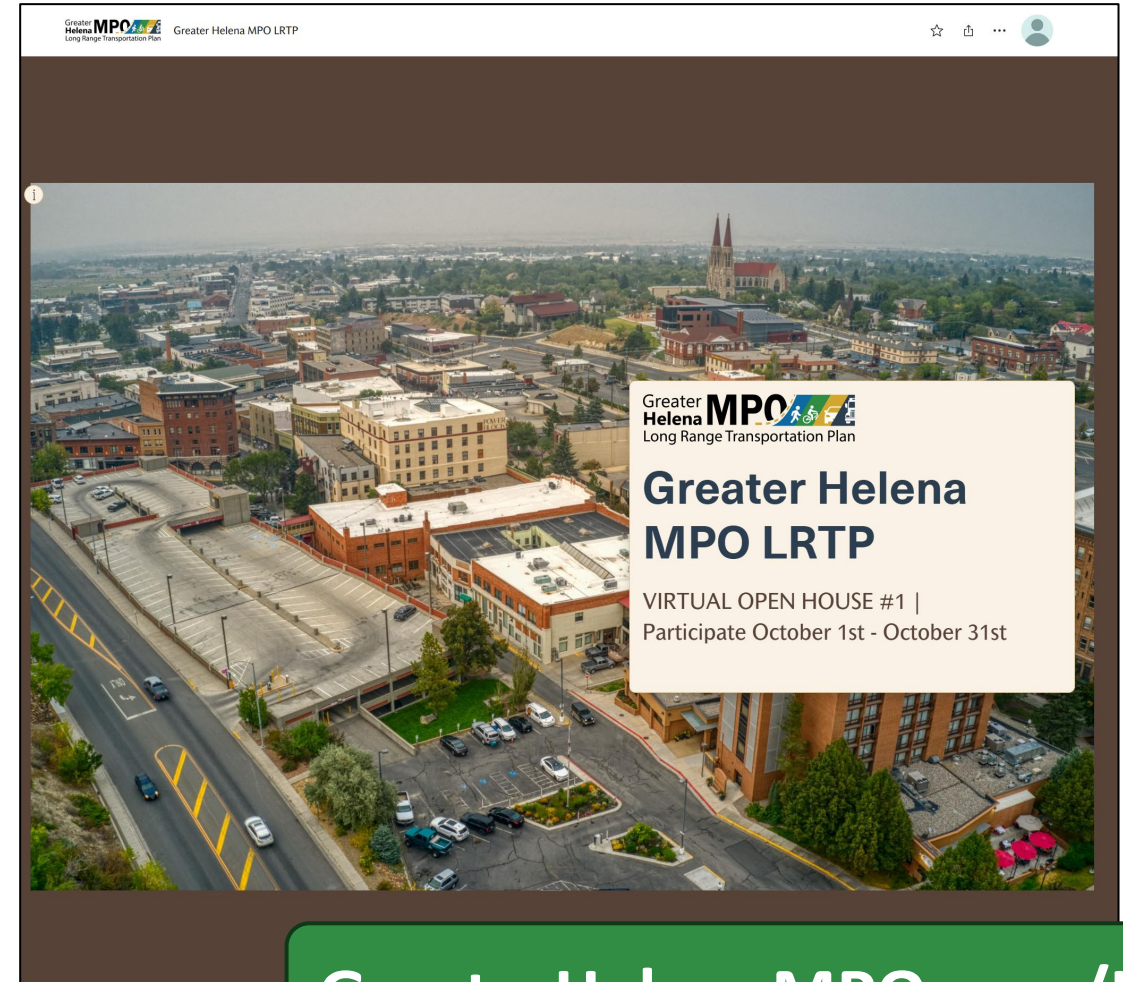
In-Person Open Houses (2)



Stakeholder Meetings (2 days)

# Virtual Open House

- **Date:** October 1<sup>st</sup> – October 31<sup>st</sup>
- **Where:** External Story Map (*linked to LRTP website*)
- **What's Included:**
  - **Video** (*LRTP overview*)
  - **Background information** (*major street & non-motorized networks*)
  - **Survey** (*broad input, priorities, & visioning*)
  - **Commenting Map**



[GreaterHelenaMPO.com/LRTP](https://GreaterHelenaMPO.com/LRTP)

# Virtual Open House

## Greater Helena MPO LRTP Survey

### WELCOME!

We want to hear from you! Your input will help shape the future of transportation in the Greater Helena Area.

A lot can change in 20 years—now is your chance to be part of the vision.

- This survey takes just **5-10 minutes**, and your feedback will guide planning for roads, transit, biking, and walking improvements across the region.
- **Your responses are anonymous.** No identifying information is required, and individual answers will not be reported.
- **Survey deadline:** October 31, 2025.
- Please be sure to complete the survey and click **SUBMIT** at the end to record your responses.

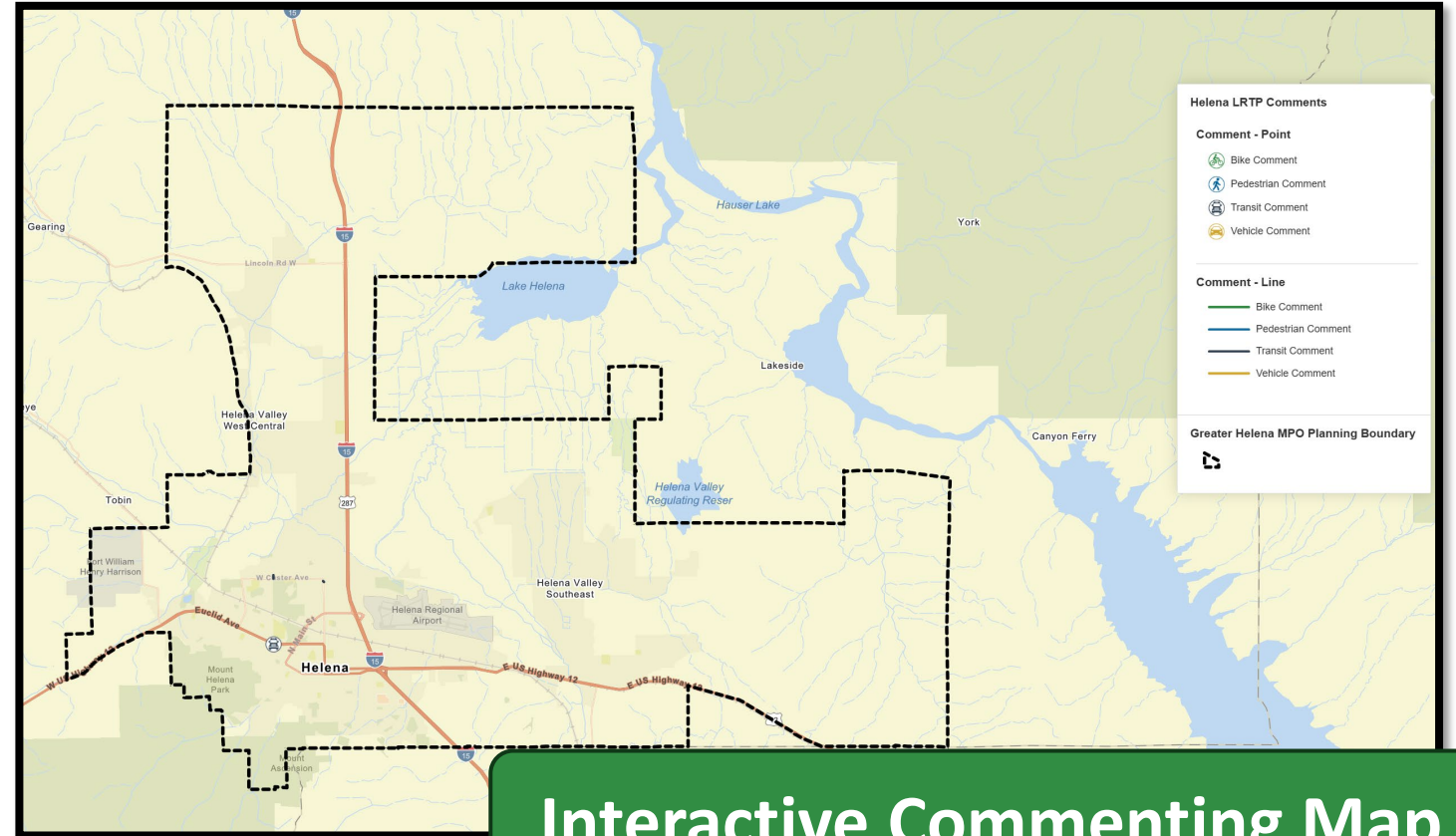
For more information about the **Greater Helena MPO Long Range Transportation Plan**, visit the project website [www.greaterhelenampo.com/LRTP](http://www.greaterhelenampo.com/LRTP) to explore background materials and learn about other opportunities to share your ideas.

Thank you for helping plan the future of transportation in our community!

Next

Page 1 of 7

Survey



Interactive Commenting Map

# In-Person Open Houses



**Helena**  
Helena Civic Center Ballroom (340 Neill Avenue)  
Tuesday, October 21st, 3:30 to 6:30 p.m.

**East Helena**  
Fireman's Recreation Hall (2 E. Pacific Street)  
Wednesday, October 22nd, 3:30 to 6:30 p.m.

## • What's Included:

- Interactive visioning activities
- Comment map/roll plot for spatial feedback
- Exhibits with LRTP overview information

**WELCOME**

Greater **Helena MPO**  
Long Range Transportation Plan

**Meeting Purpose**

- Educate** yourself about the planning process.
- Share** your vision for the future of transportation in the Greater Helena Area.
- Provide** input & feedback.

**Greater Helena MPO**  
Metropolitan Planning Organization

The **Greater Helena MPO** consists of three local governments (City of Helena, City of East Helena, and Lewis & Clark County) and one state agency (MDT). The **consulting team** from RPA, with support from Crescendo, is assisting in the planning effort.

**LRTP Planning Process & Overview**

The **Long Range Transportation Plan (LRTP)** will help guide transportation infrastructure investments based on **system needs, community priorities, and anticipated growth.**

**Planning Horizon:** 20+ years  
**Updated:** Every 5 years  
(4 years for air quality nonattainment areas)  
**Considers:** All modes of transportation

The LRTP provides an opportunity to **respond** to the changing needs and interests of the community, **plan** for emerging transportation technologies, **advance** national, state, and local initiatives, and **prepare** the Greater Helena Area for future transportation funding opportunities.

**1 INVENTORY** the existing transportation system

**2 FORECAST** future population growth and traffic conditions

**3 ANALYZE** data to determine existing and future system performance

**4 RECOMMEND** solutions to meet system and user needs

**5 COMPLY** with local constraint and performance target requirements

To strengthen the LRTP, a companion effort to develop a **Comprehensive Safety Action Plan (CSAP)** is also underway. It will focus on reducing traffic fatalities and serious injuries to ensure that safety remains at the core of the region's long-term transportation vision.

# Stakeholder Meetings

- **Date:** October 21<sup>st</sup> & 22<sup>nd</sup>
- **Time:** 10:00 AM – 2:00 PM
- **Where:** RPA office or Virtual

## 7 meetings scheduled so far:

- Helena Chamber of Commerce
- Montana Trucking Association
- L&C County Sheriff's Office
- Helena Regional Airport
- Big Sky Rail Authority
- East Helena Schools
- Bike Walk Montana

### Greater Helena MPO Long Range Transportation Plan

SELECT A SERVICE

VIRTUAL Stakeholder Meeting (30 min)

Take some time to chat with a member of t... [Read more](#)  
30 minutes

IN-PERSON Stakeholder Meeting (30 min)

Take some time to chat with a member of t... [Read more](#)  
30 minutes

Booking for IN-PERSON Stakeholder Meeting (30 min)

October 21

DATE TIME

< > October 2025

S	M	T	W	T	F	S
			1	2	3	4
5	6	7	8	9	10	11
12	13	14	15	16	17	18
19	20	21	22	23	24	25
26	27	28	29	30	31	

10:30 AM

11:00 AM

11:30 AM

12:00 PM

12:30 PM

1:00 PM

1:30 PM

# Noticing Efforts

- **Email Outreach**

- Stakeholder Meeting Sign Up
- General Open House Invite


- **Website Noticing**

- **Social Media**

- Partner Agency Facebook, Twitter/X, LinkedIn, Instagram, etc.

- **Traditional Outreach**

- News Release
- Flyers at various locations
- Blurbs in community newsletters (non-profits, chamber, schools, etc.)



**OPEN HOUSE!**

**JOIN US!**

**Helena** Tuesday Oct. 21  
3:30 - 6:30pm  
Civic Center Ballroom @ 340 Neill Ave

**East Helena** Wednesday Oct. 22  
3:30 - 6:30pm  
Fireman's Recreation Hall @ 2 E. Pacific St

Greater **Helena MPO**  
Long Range Transportation Plan



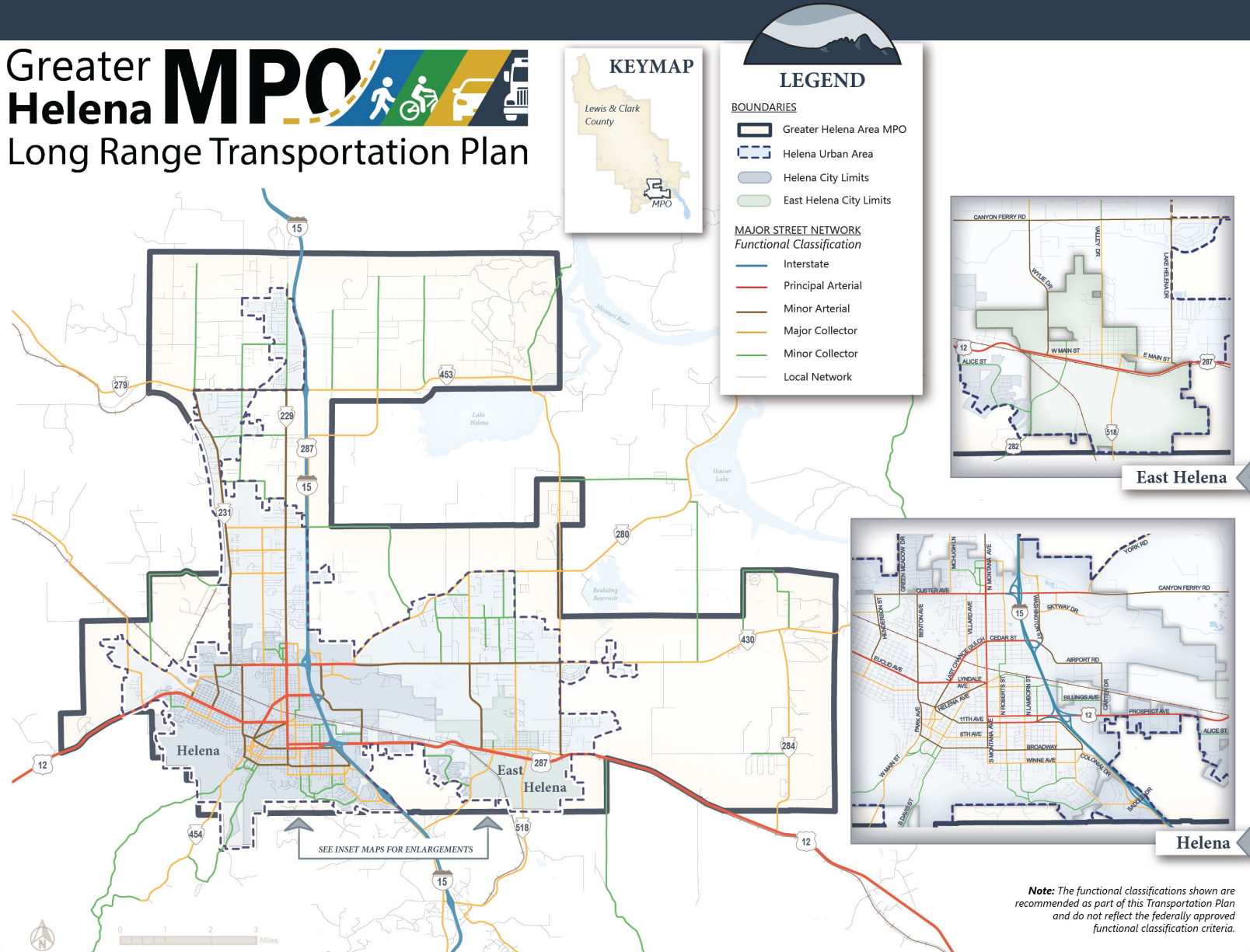
# Existing Conditions

# Major Street Network

## Functional Classification

- Incorporates input from:
  - City of Helena
  - City of East Helena
  - L&C County
  - MDT
  - RPA
- Reflects the “Local Perspective”

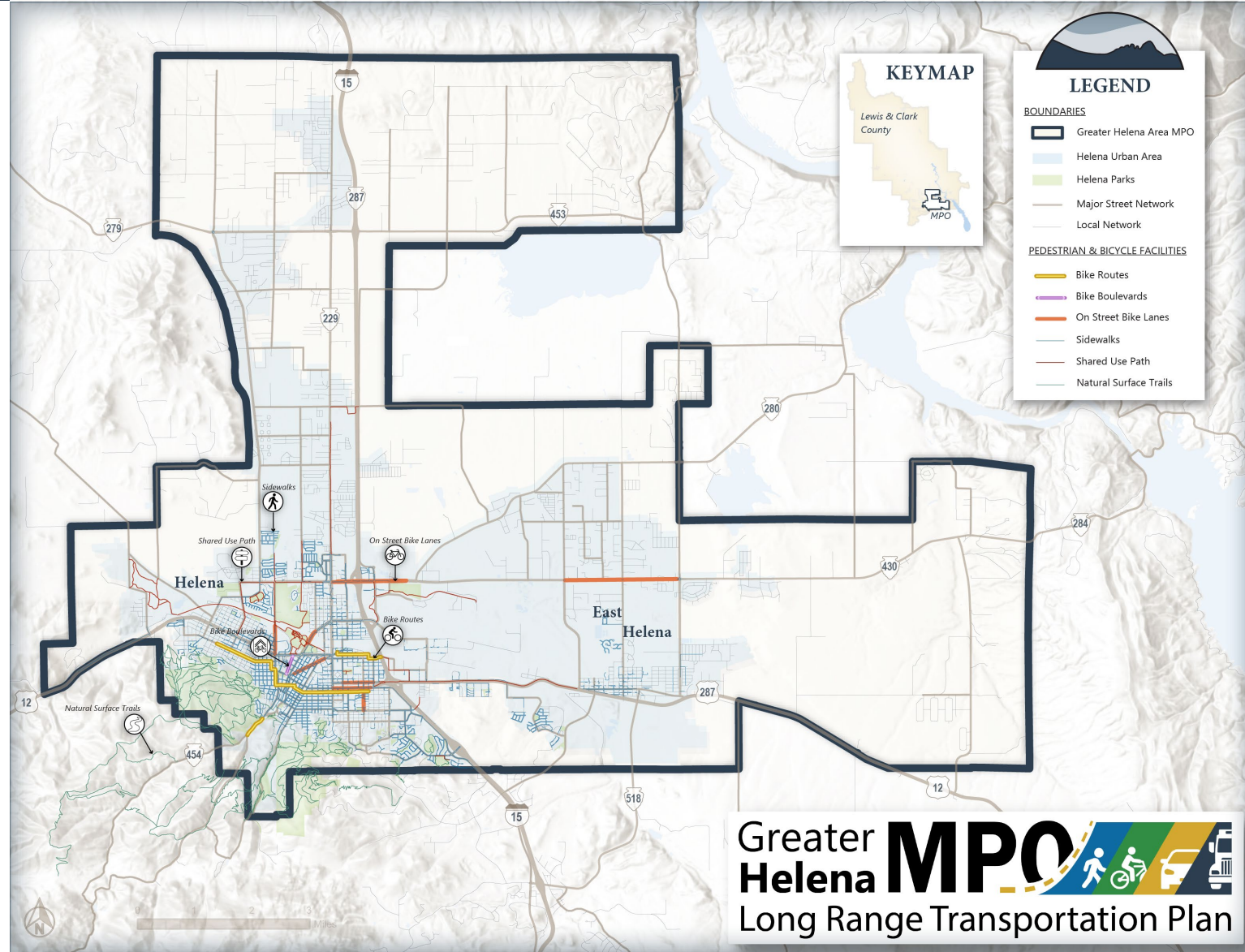
## Greater Helena MPO Long Range Transportation Plan



# Non-Motorized Network

## Existing Facilities

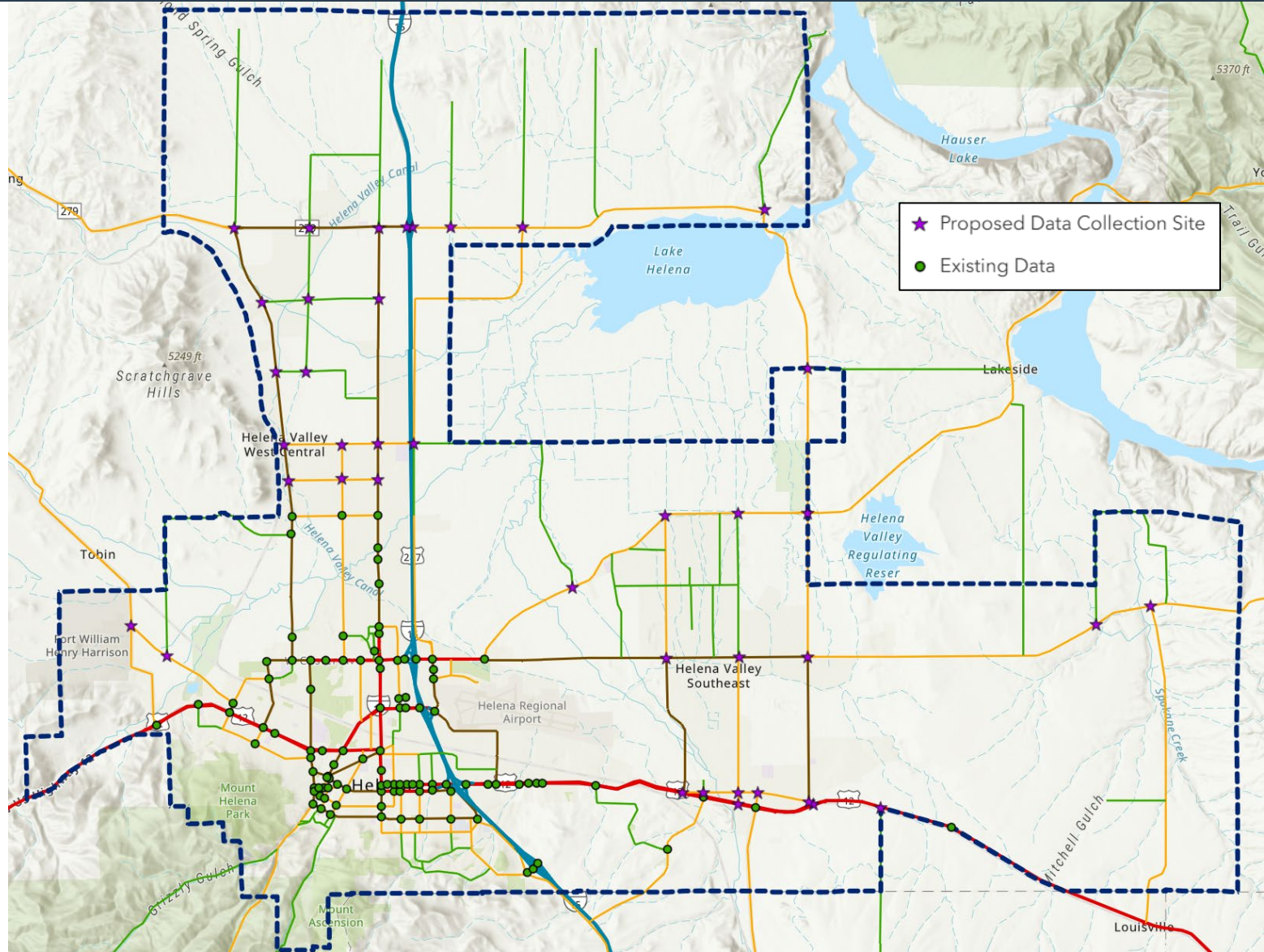
- Incorporates:
  - City of Helena/L&C County GIS data
  - RPA “ground truthing” & updates
- Includes:
  - Signed bike routes
  - Bike boulevards (shared routes)
  - Bike lanes
  - Sidewalks
  - Shared use paths
  - Trails
  - Crosswalks (*pending*)



# Data Collection

## 40 Sites

- Incorporates input from:
  - City of Helena
  - City of East Helena
  - L&C County
  - RPA
- Focus on major street network intersections
- Collect mid-Oct through mid-Nov



# Land Use Forecasting Workshop

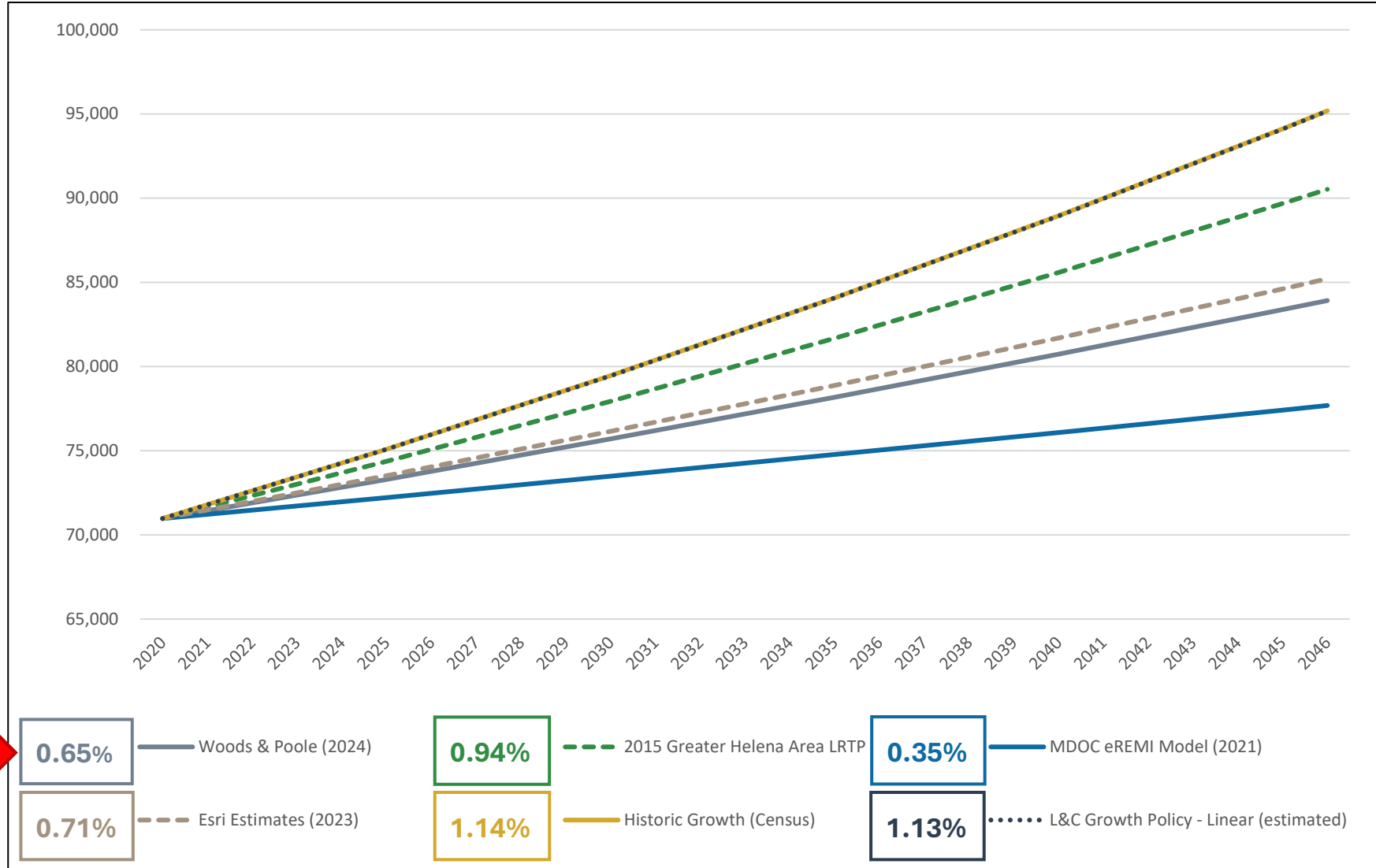
- **Date:** October 31<sup>st</sup>
- **Attendees:**
  - City & County Planning Board
  - Local Planning Staff
  - LRTP Project Management Team
- **Process:**
  - Select appropriate growth rates (population & employment)
  - Convert population growth to housing growth
  - Identify current housing/employment density (based on travel demand model)
  - Assign future growth based on known/anticipated development

# Future Projections

Source	Calc. Basis	2046	CAGR
US Census Bureau Decennial Census	2010-2020	95,190*	1.14%
2015 Greater Helena Area LRTP (Study Area Population Only)	2010-2035	82,287*	0.94%
Esri Estimates (Base Year 2023)	2023-2028	86,674*	0.71%
Montana Department of Commerce REMI Model (Updated in 2021)**	2022-2046	80,091	0.35%
Woods & Poole (Updated in 2024)**	2022-2046	86,124	0.65%
Lewis and Clark County Growth Policy - Linear Trend Model (Estimated)	2022-2040	96,626*	1.13%
City of Helena Growth Policy (REMI)	2024-2045	45,381*	1.26%
City of East Helena Growth Policy Scenario 1	2020-2030	2,512*	0.66%
Scenario 2		3,103*	1.45%
Scenario 3		4,527*	2.88%

\*Estimated by applying CAGR to latest available population estimate

\*\*Estimates also referenced in Lewis and Clark County Growth Policy

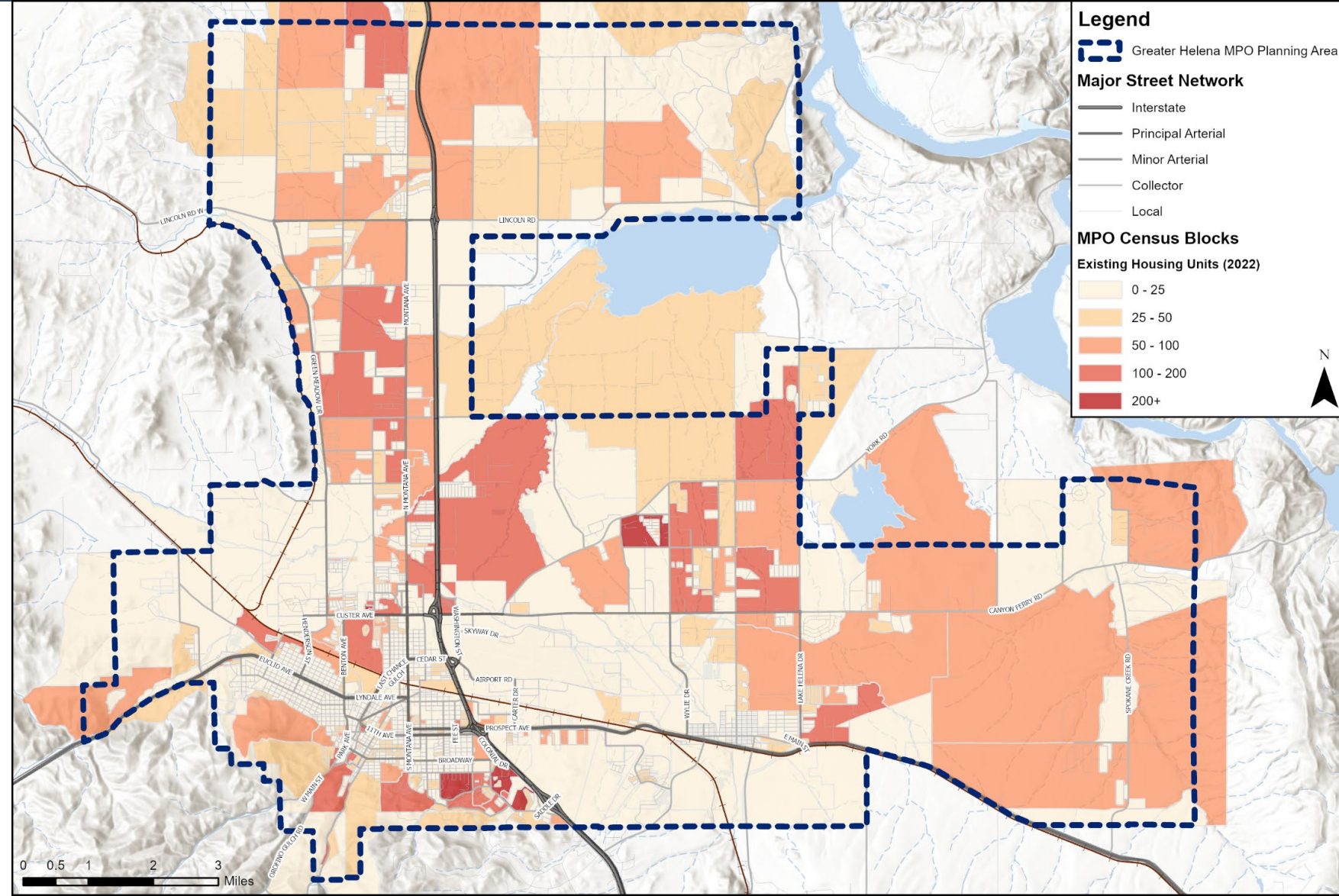


# Future Projections

## Land Use Forecasting Workshop

- Evaluate/discuss available growth rates
- Allocate known & anticipated growth within MPO planning area
- Re-evaluate growth rate as needed

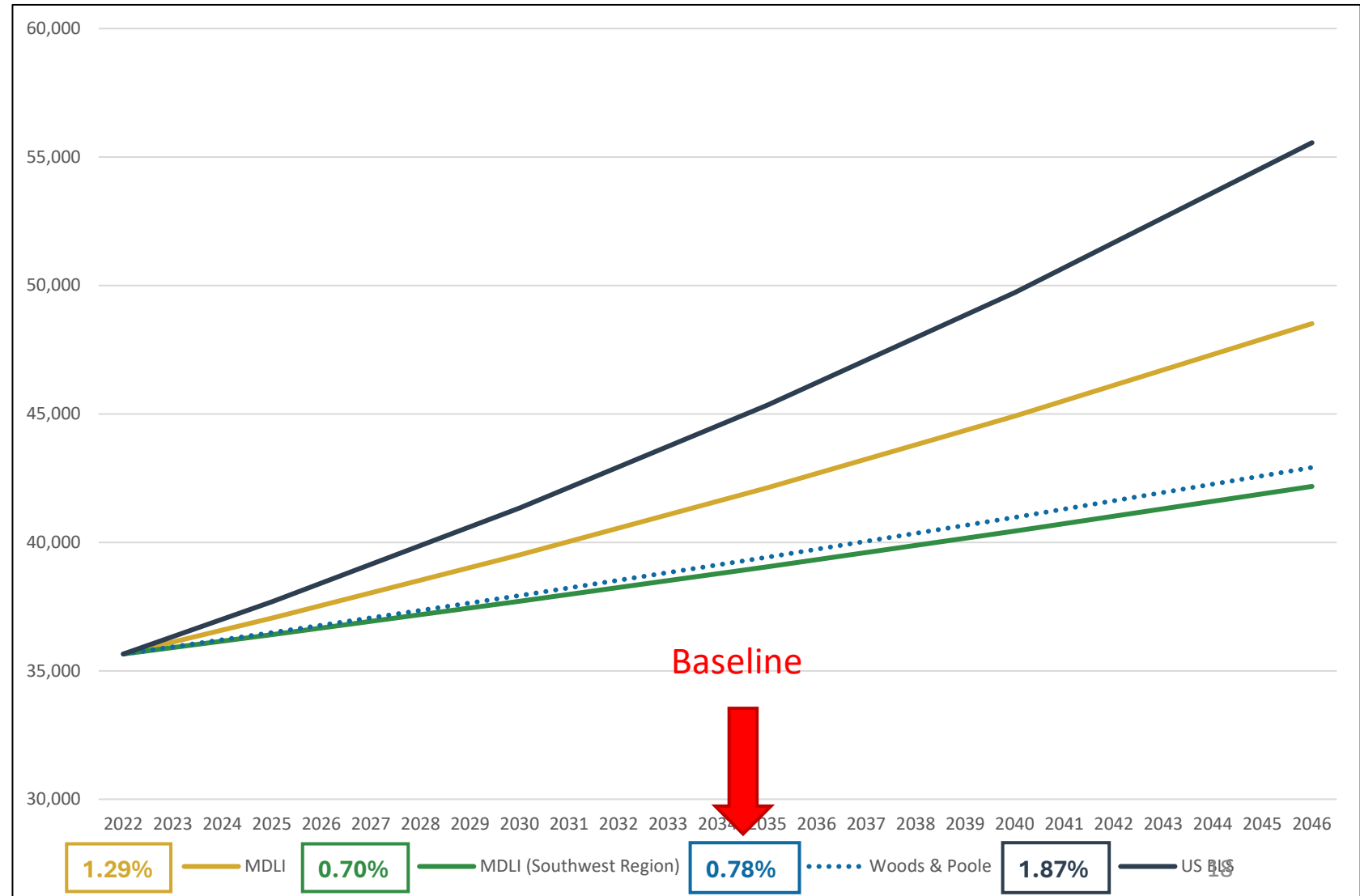
Given baseline growth rate (0.65%)  
4,908 new housing units would be  
allocated within the MPO  
(2022-2046)



# Future Projections

Source	Calc. Basis	2046	CAGR
US Bureau of Labor and Statistics (US BLS)	2022-2024	60,005*	1.87%
MDLI (Lewis and Clark County)	2022-2024	48,515*	1.29%
MDLI (Southwest Region, Base Year 2021)	2024-2034	197,154*	0.70%
Woods & Poole (Updated in 2024)	2022-2046	64,112	0.78%

\*Estimated by applying CAGR to latest available employment estimate

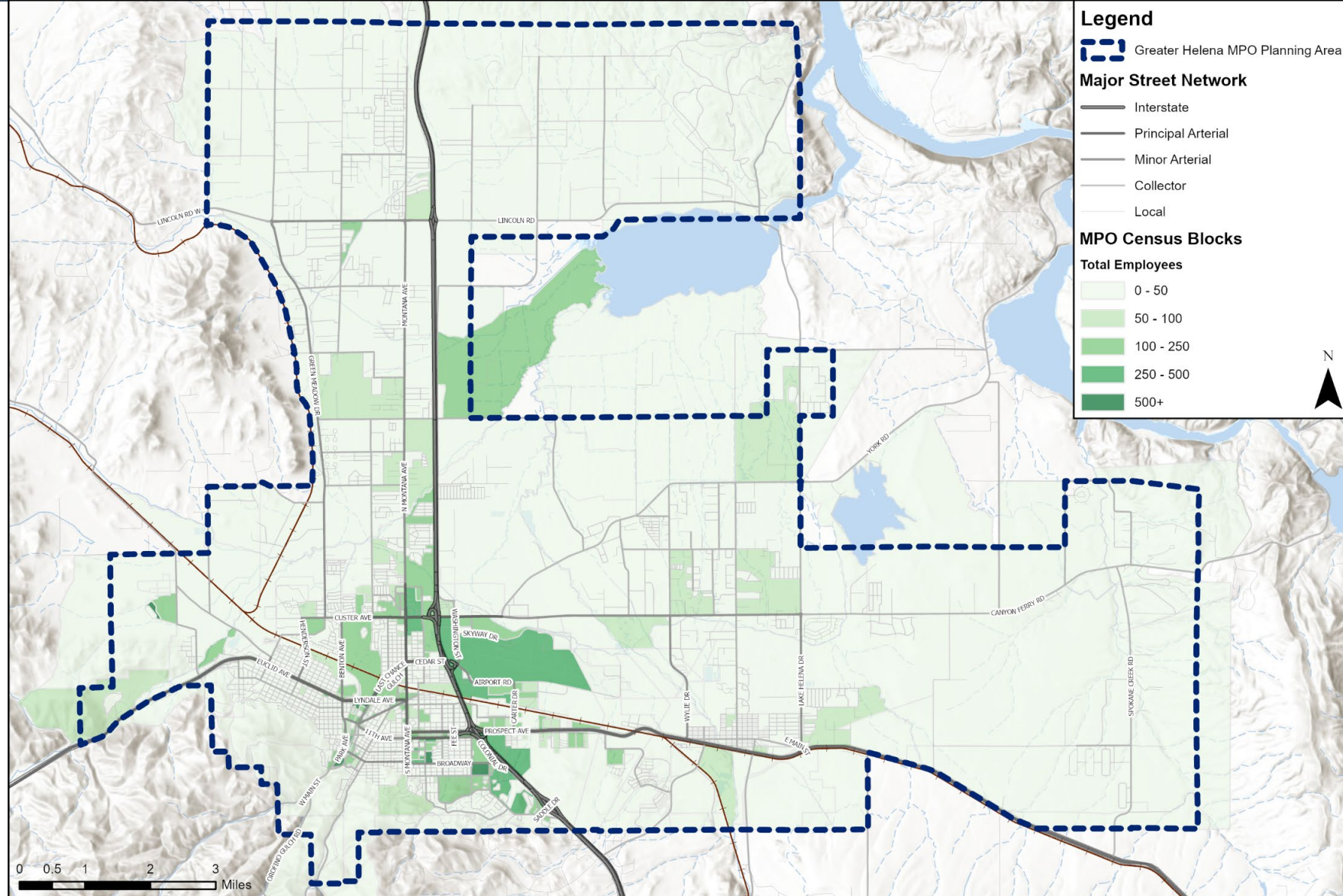


# Future Projections

## Land Use Forecasting Workshop

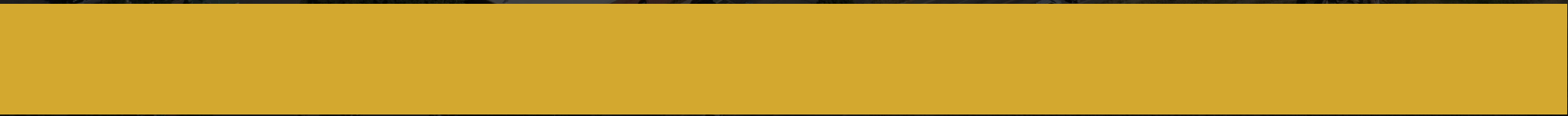
- Evaluate/discuss available growth rates
- Allocate known & anticipated growth within MPO planning area
- Re-evaluate growth rate as needed

Given baseline growth rate (0.78%)  
**7,463 new jobs** would be allocated  
within the MPO  
(2022-2046)

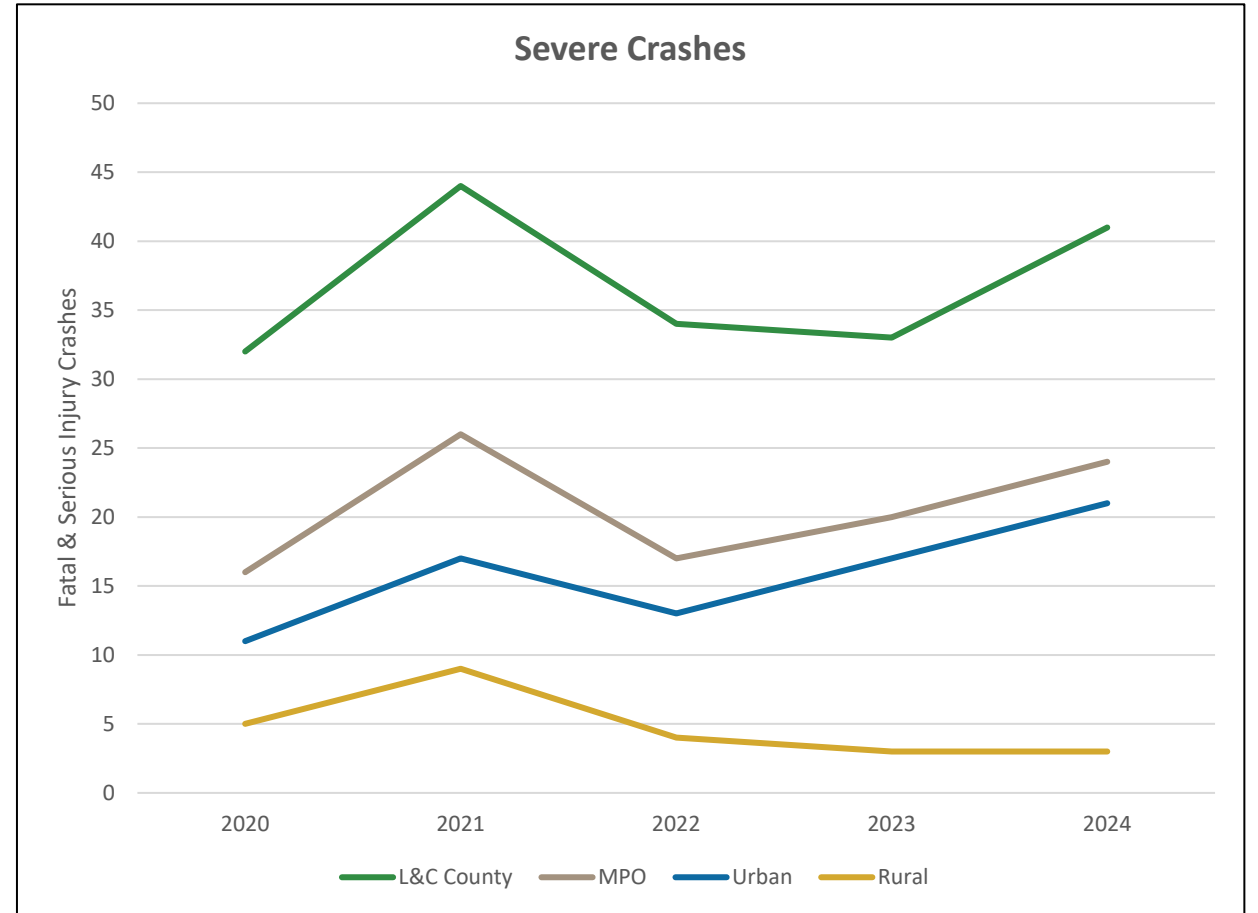
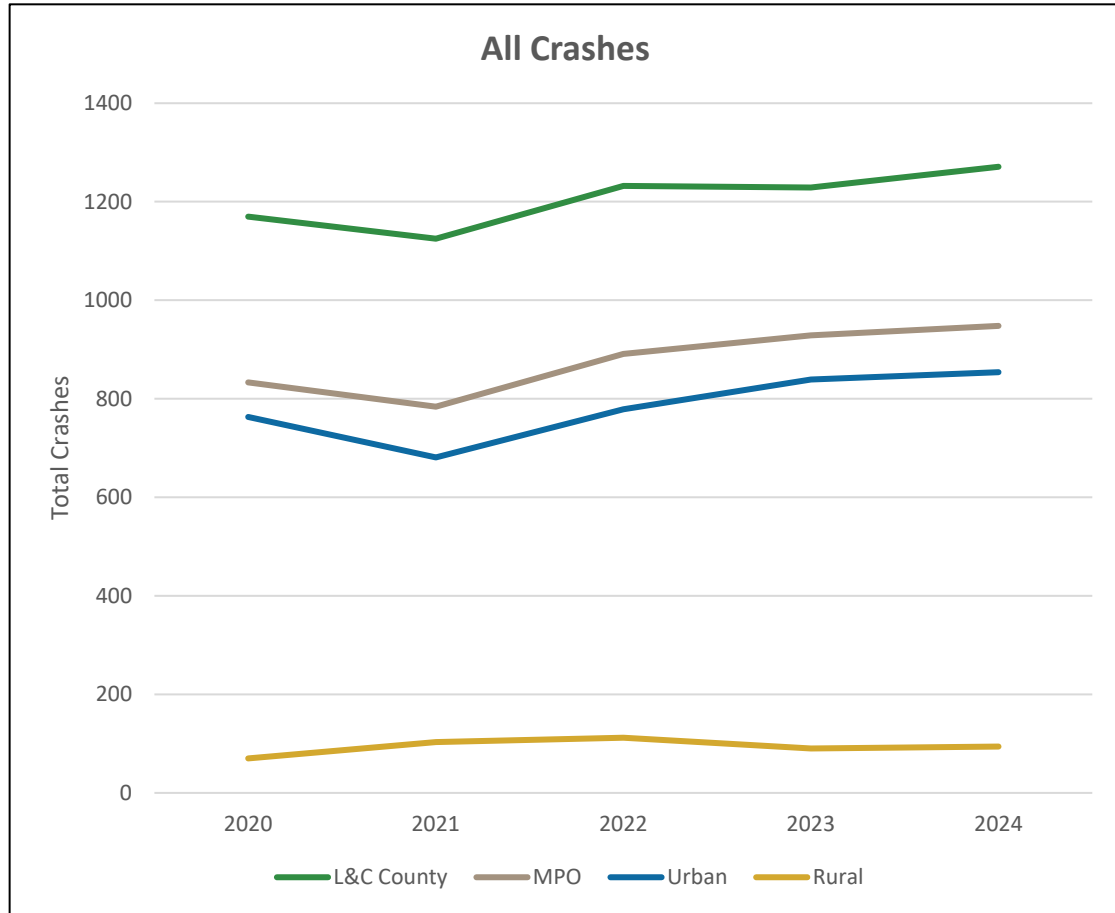




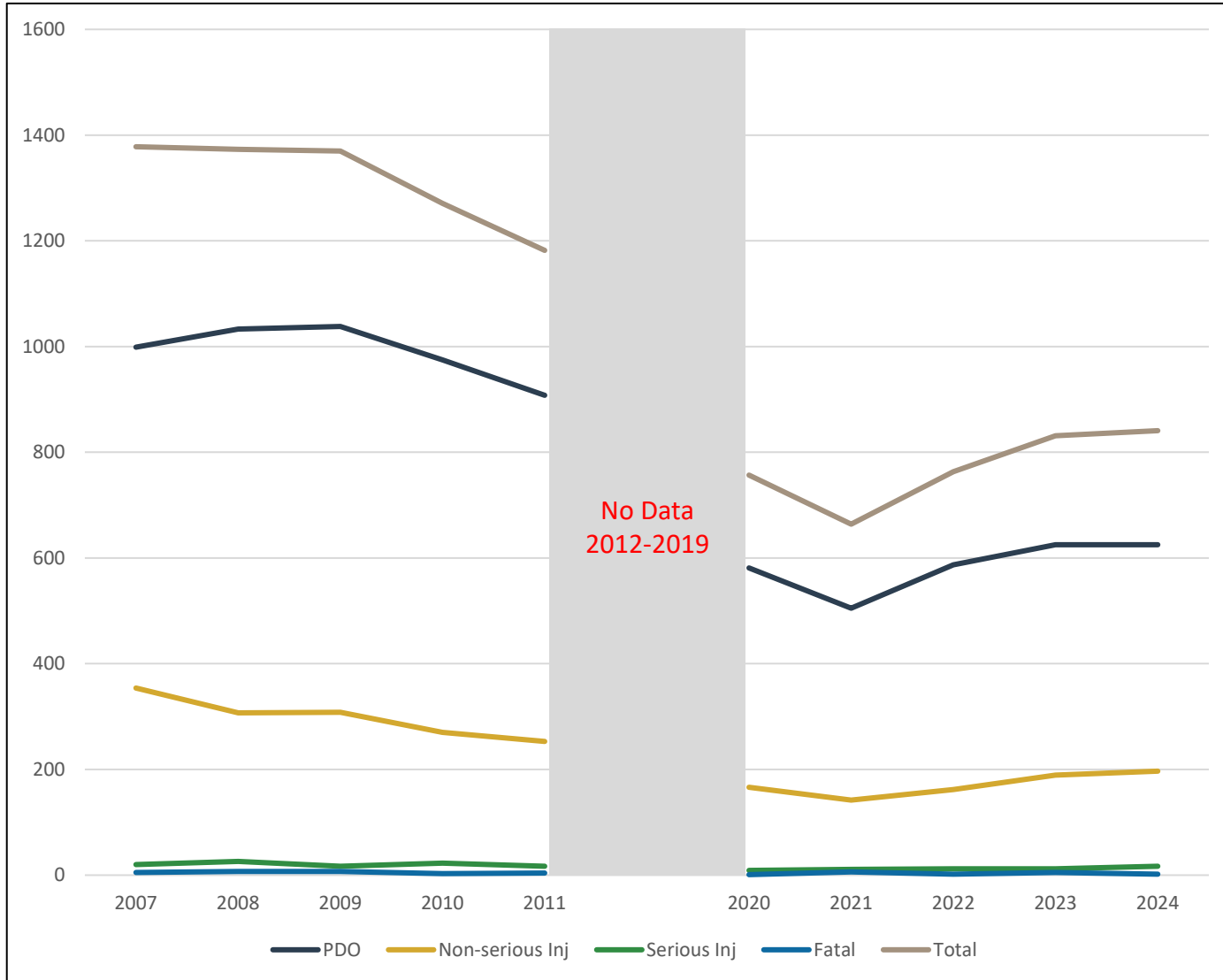
# Safety



# Safety Analysis



# Safety Analysis



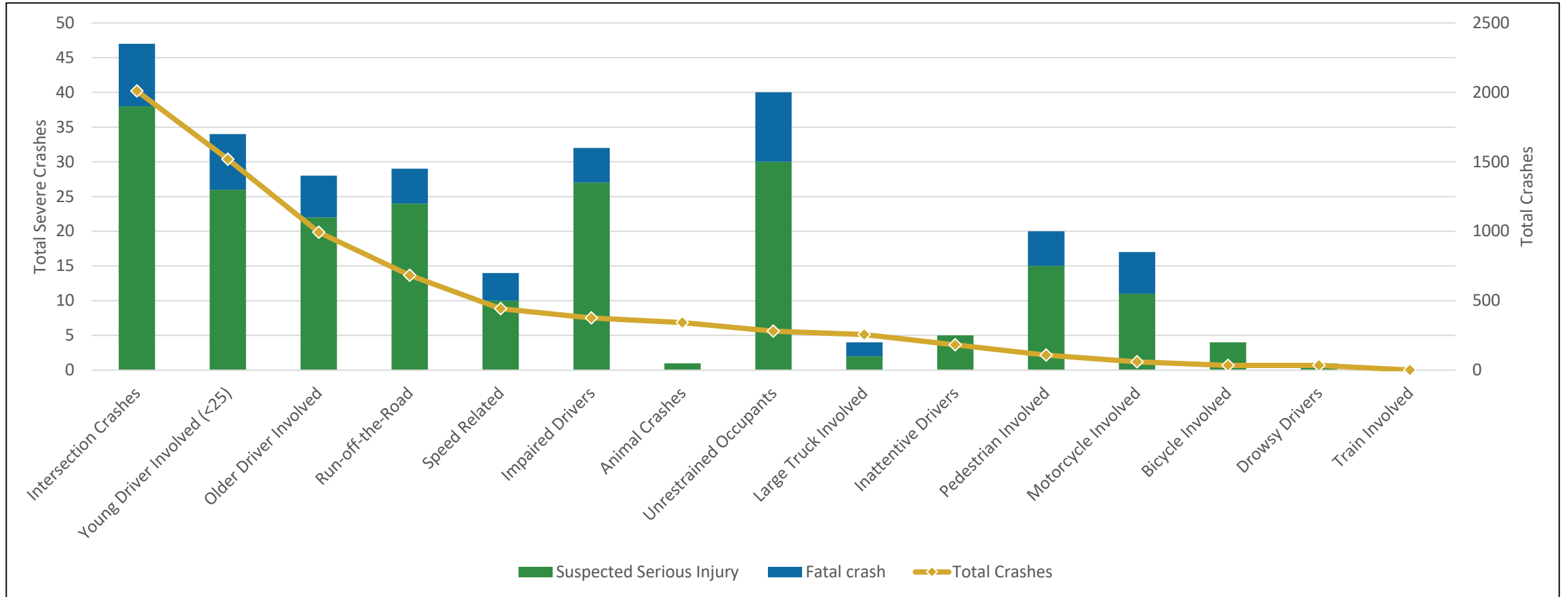
## Comparison to 2013 CTSP:

Crashes	2007-2011	2020-2024	% Change
PDO	991	585	-41%
Non-Serious Injury	298	171	-43%
Serious Injury	21	12	-43%
Fatal	5	3	-40%
Total	1,315	771	-41%

*(Based on 2010 urban boundary)*

**2013 Goals**  
**Goal: Zero Fatalities**  
**Interim Goal: Reduce crashes in the Greater Helena Area by 25% by 2018**  
**(5-yr avg: 986 crashes)**

# Focus Areas



# Focus Areas

Focus Area	Total Crashes	Rank	Severe Crashes	Rank
<b>Intersection Crashes</b>	<b>2,010</b>	<b>#1</b>	<b>47</b>	<b>#1</b>
<b>Run-off-the-Road Crashes</b>	<b>682</b>	<b>#4</b>	<b>29</b>	<b>#4</b>
<b>High Risk Behaviors</b>				
<i>Speed-Related</i>	442	#5	14	#9
<i>Impaired Drivers</i>	376	#6	32	#4
<i>Unrestrained Occupants</i>	280	#8	40	#2
<i>Inattentive Drivers</i>	182	#10	5	#10
<b>Non-Motorized Users</b>				
<i>Pedestrian Involved</i>	108	#11	20	#7
<i>Bicycle Involved</i>	35	#13	4	#12
<b>Driver Age</b>				
<i>Younger Drivers (&lt;25)</i>	1,518	#2	34	#3
<i>Older Drivers (65+)</i>	993	#3	28	#6
<b>Motorcycle Involved</b>	<b>60</b>	<b>#12</b>	<b>17</b>	<b>#8</b>

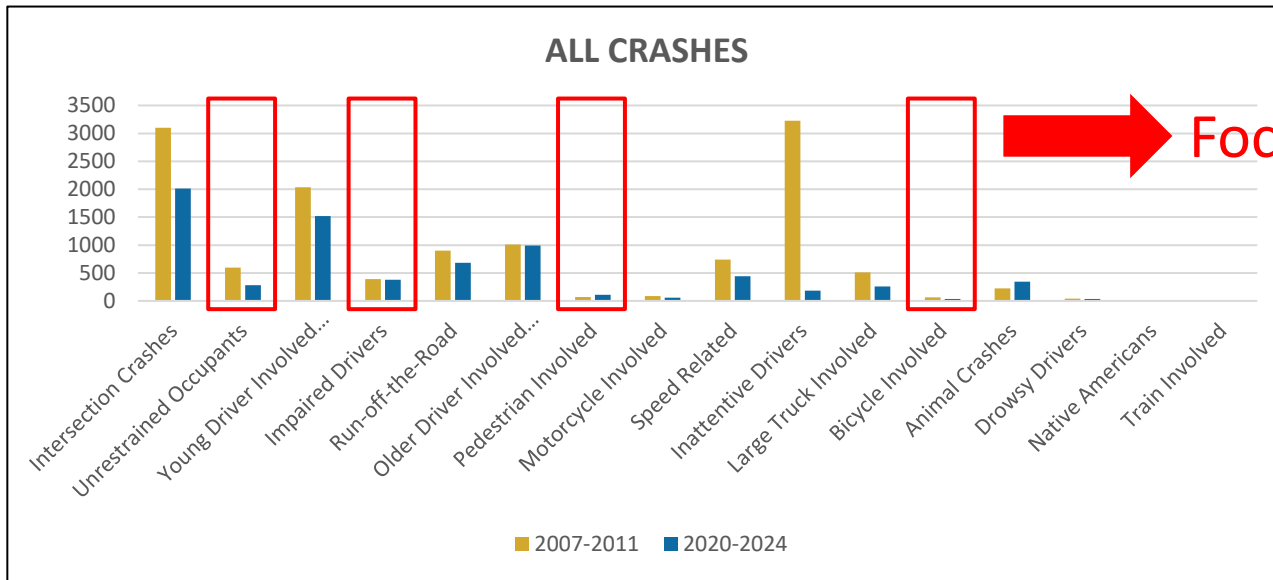
➔ Focus Area for 2013 CTSP

➔ Focus Area for 2013 CTSP

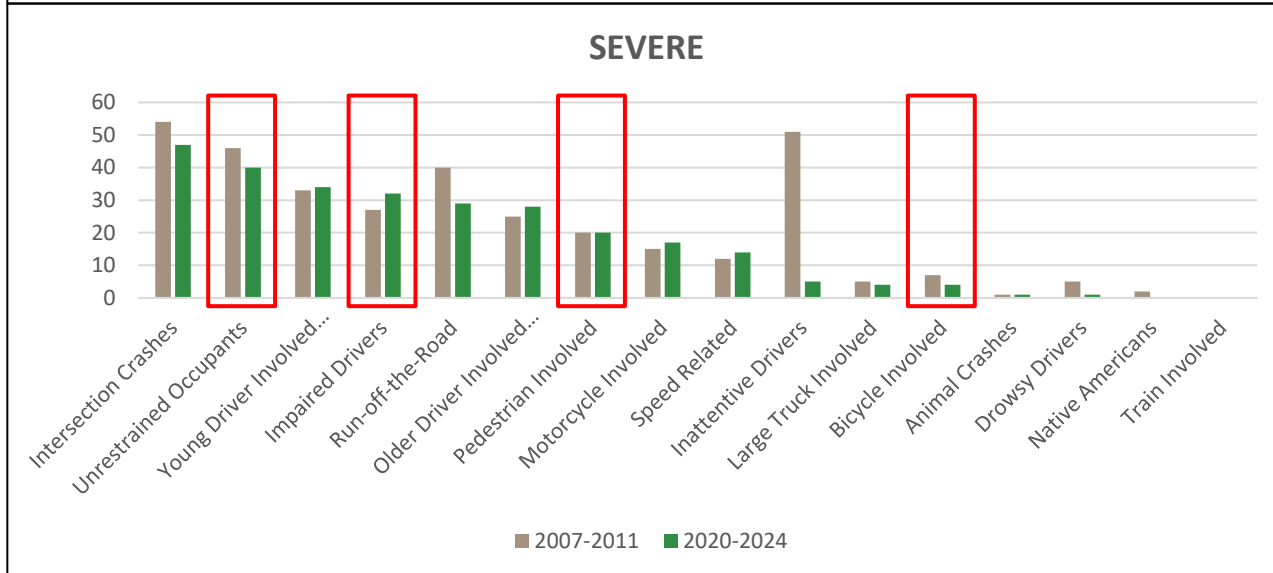
➔ Focus Area for 2013 CTSP

➔ Focus Area for 2013 CTSP

# Focus Areas



Focus Areas for 2013 CTSP



## Proposed Focus Areas for CSAP:

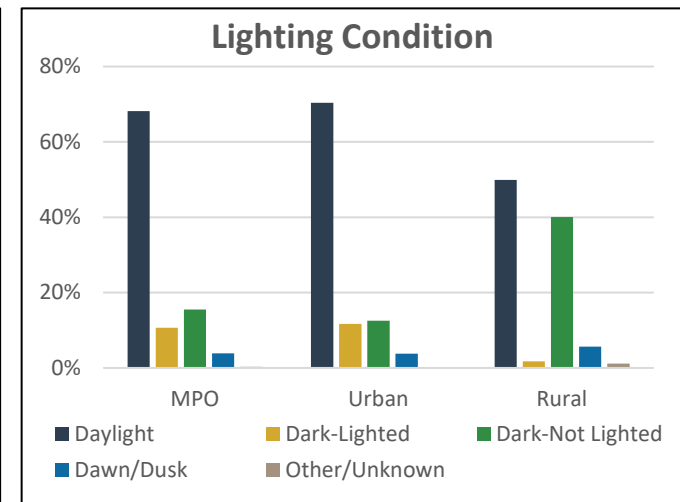
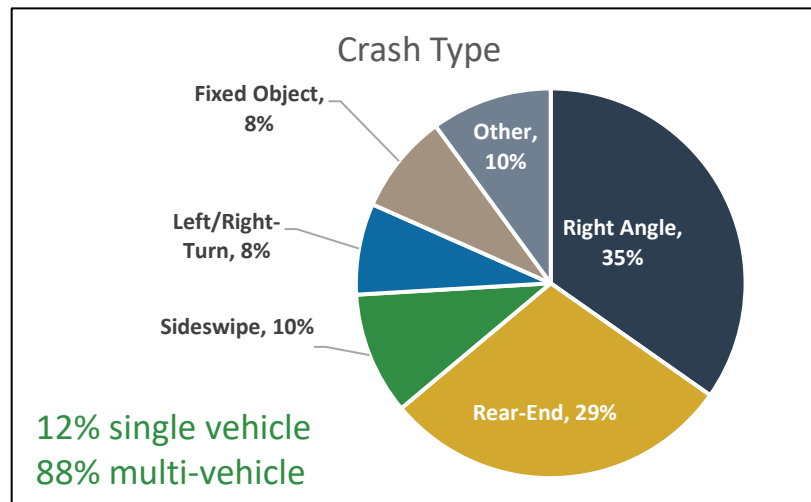
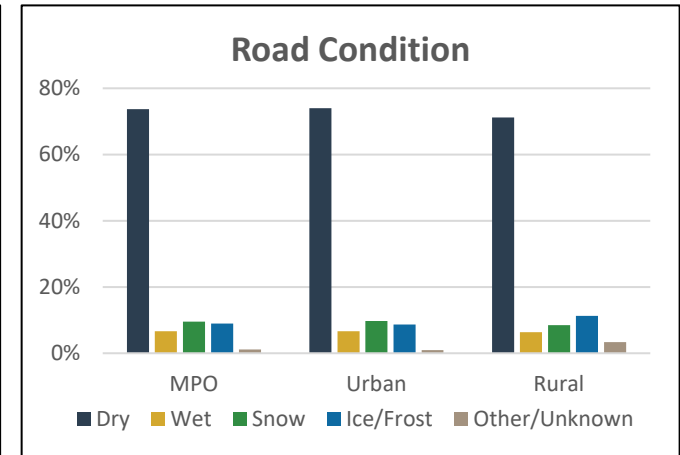
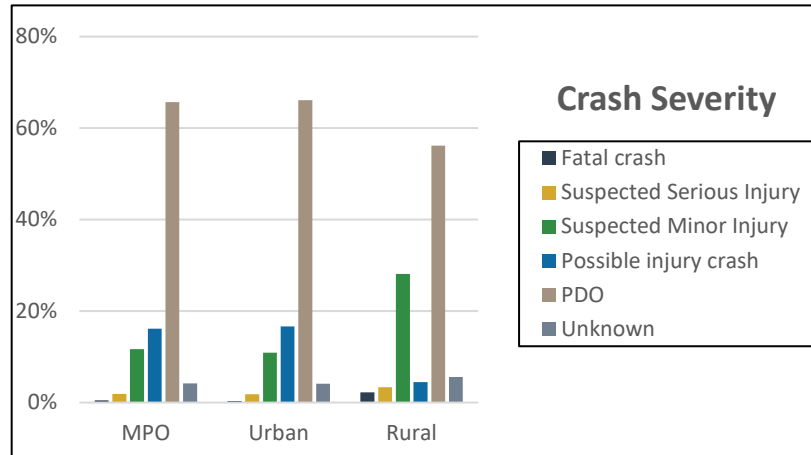
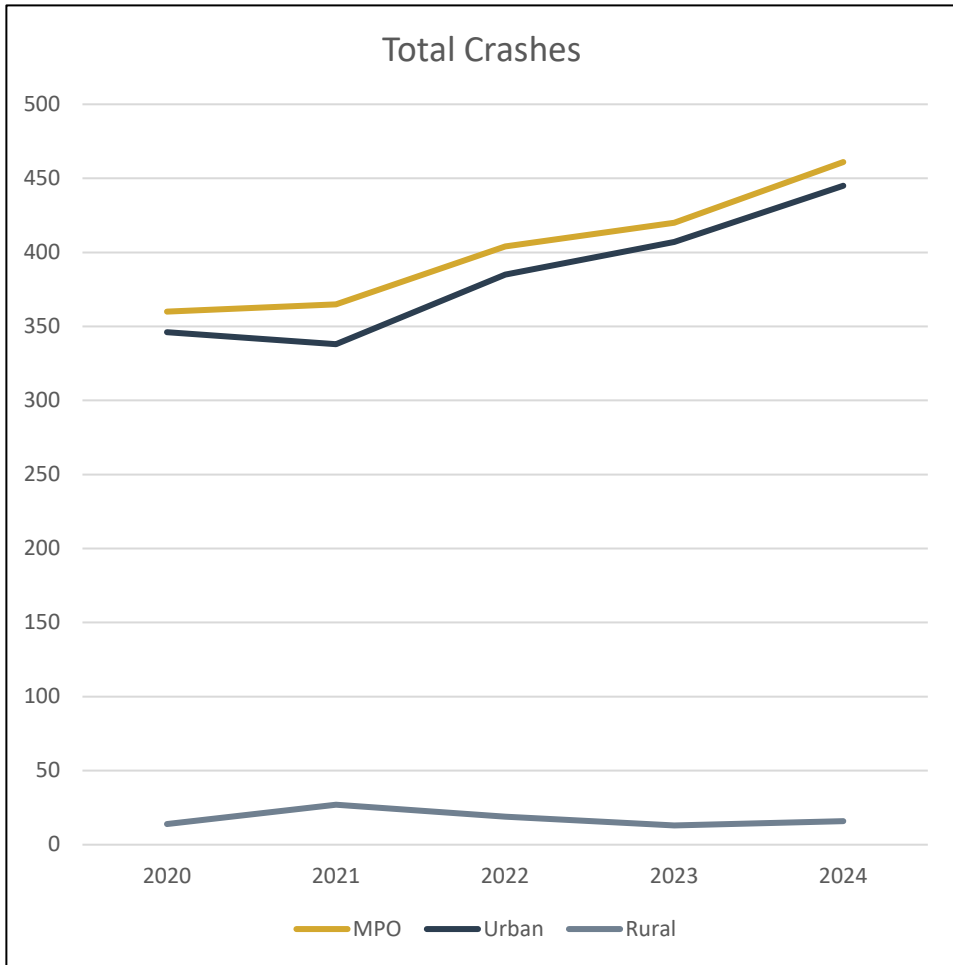
1. **Intersection Crashes** (*urban focus*)
2. **Run off the Road Crashes** (*rural focus*)
3. **Non-Motorized Users** (*multimodal focus*)
4. **High Risk Behaviors** (*behavioral based*)
  - a) Impaired Drivers
  - b) Unrestrained Occupants
  - c) Inattentive Drivers
  - d) Speed-Related Crashes

*\*Incorporate age-based strategies as appropriate\**

# Intersection Crashes

9 Fatalities 40 Serious Injuries 2,010 Crashes

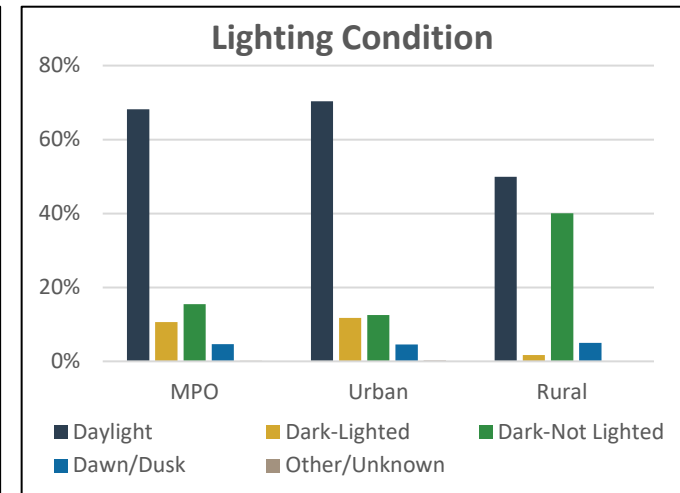
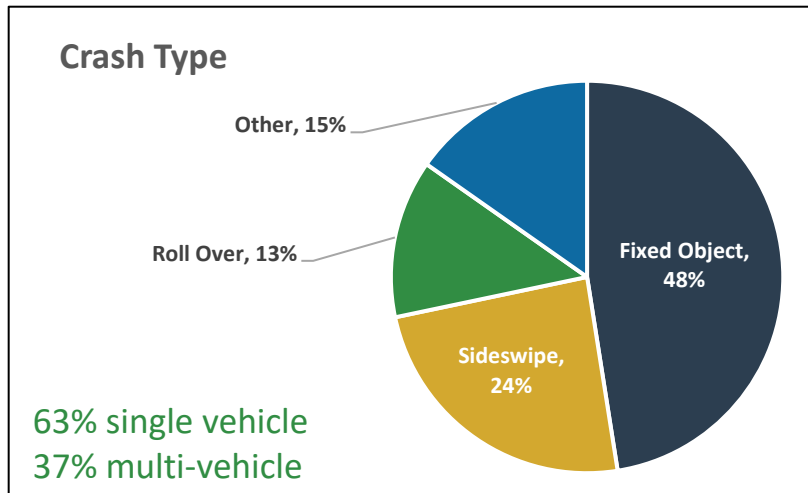
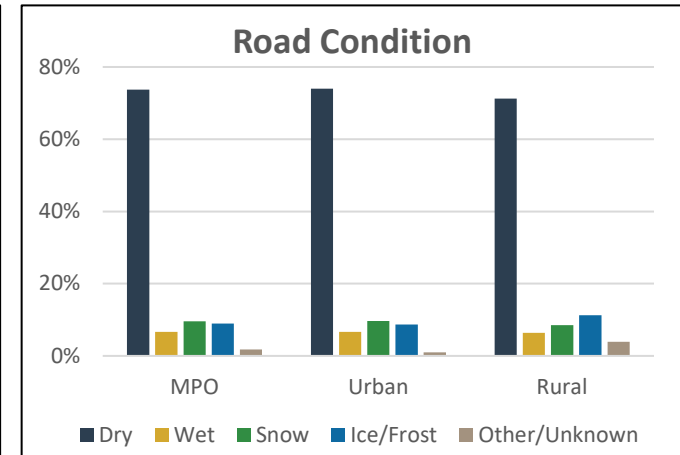
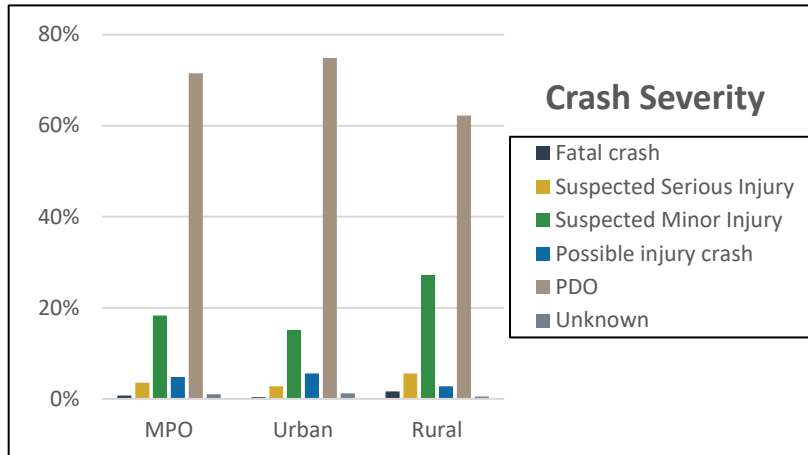
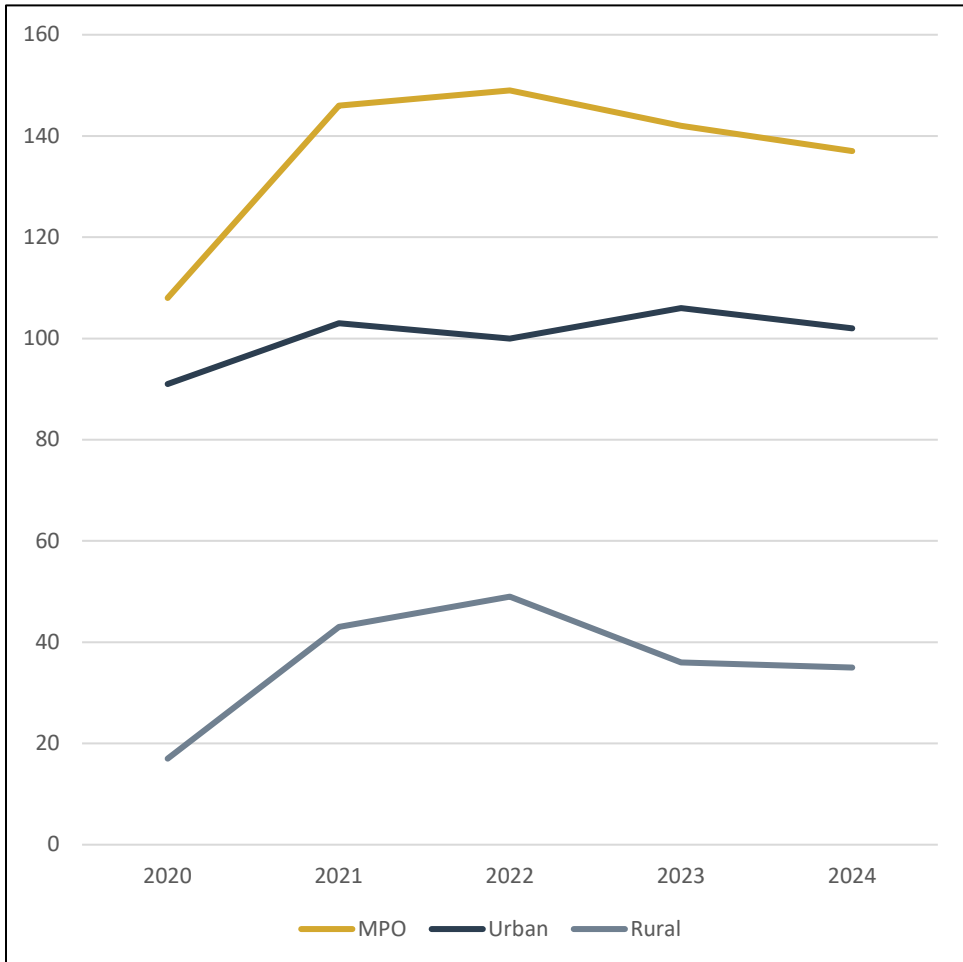
(Most crashes & most severe crashes overall)



# Run-off-the-Road / Lane Departure Crashes

**5** Fatalities   **27** Serious Injuries   **682** Crashes

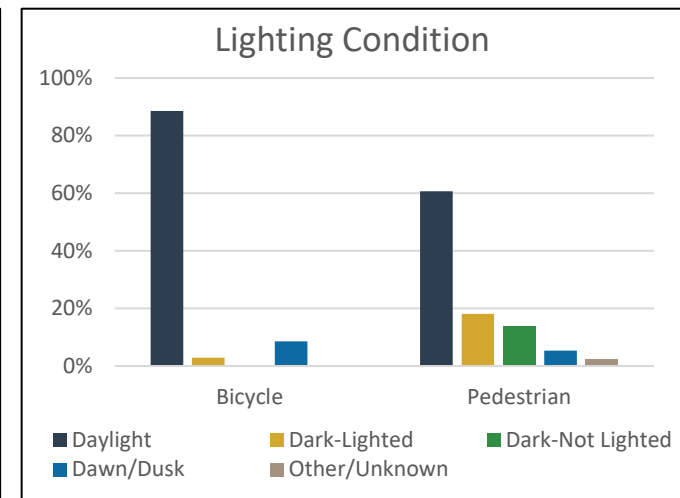
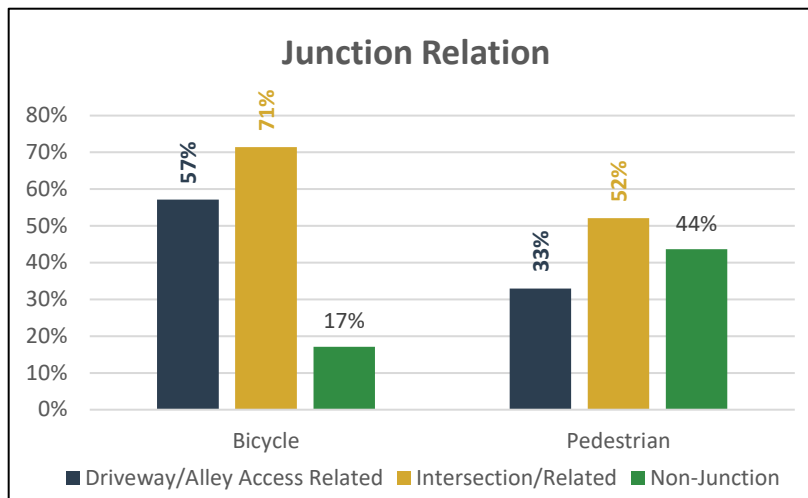
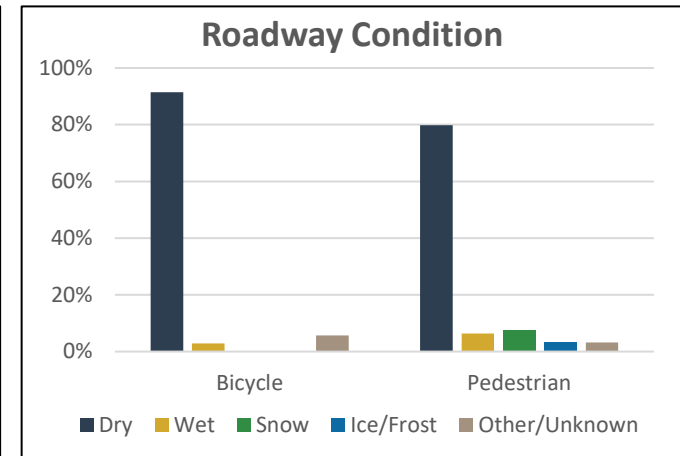
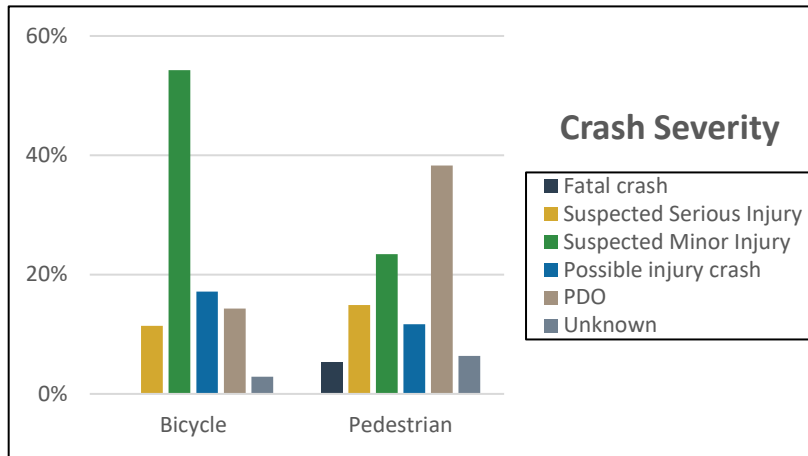
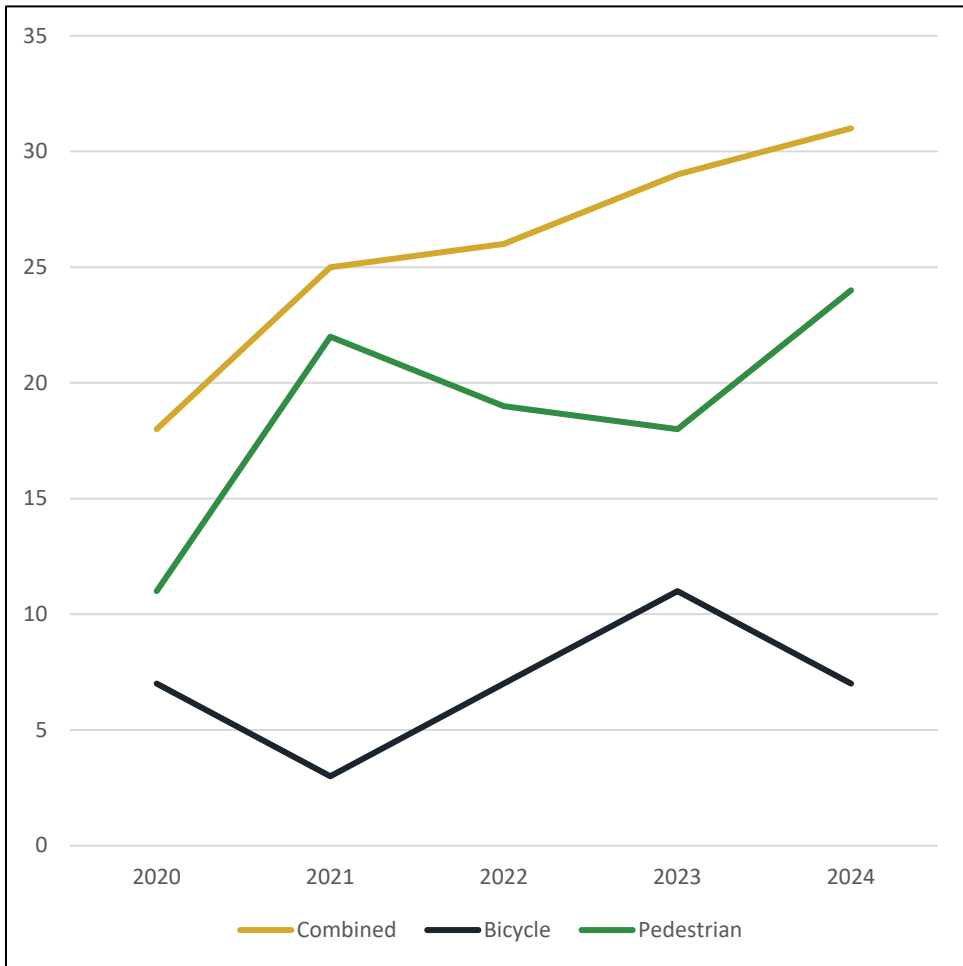
(4<sup>th</sup> most crashes & 4<sup>th</sup> most severe crashes)



# Non-Motorized Users

**5** Fatalities   **18** Serious Injuries   **129** Crashes

(Fewer crashes, higher rate of severe crashes)



# High Risk Behaviors

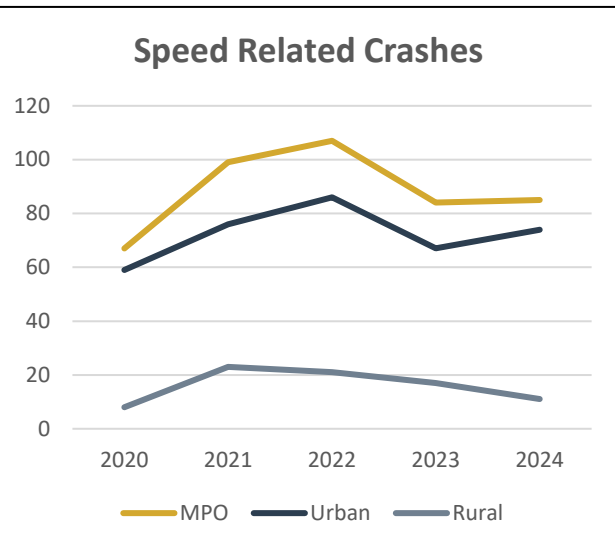
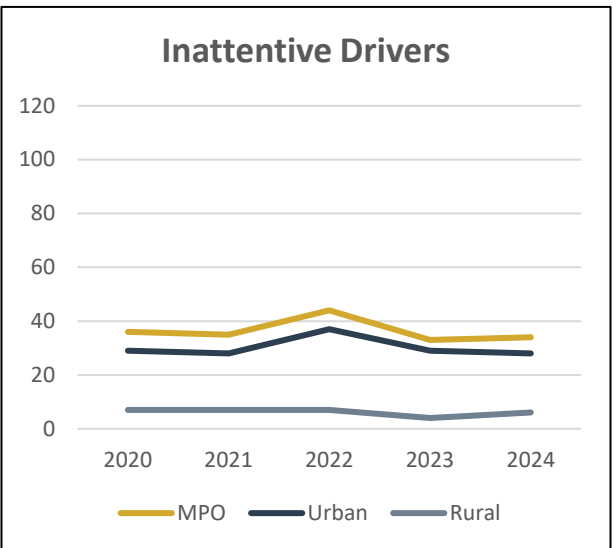
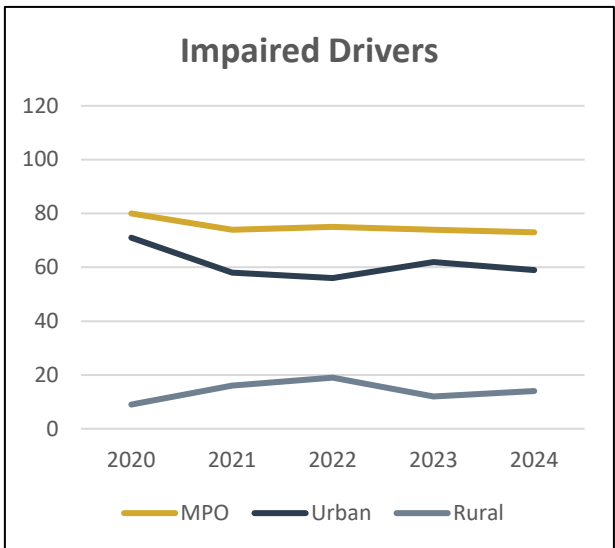
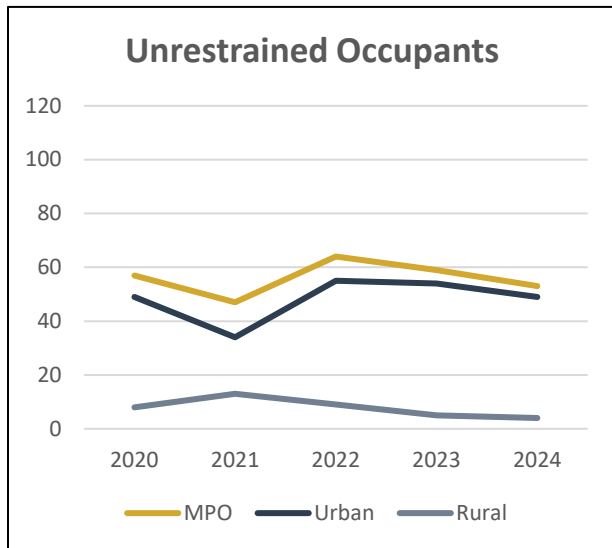
**Unrestrained Occupants:** 9 Fatalities\* 29 Serious Injuries\* 280 Crashes

\*Unrestrained occupants only

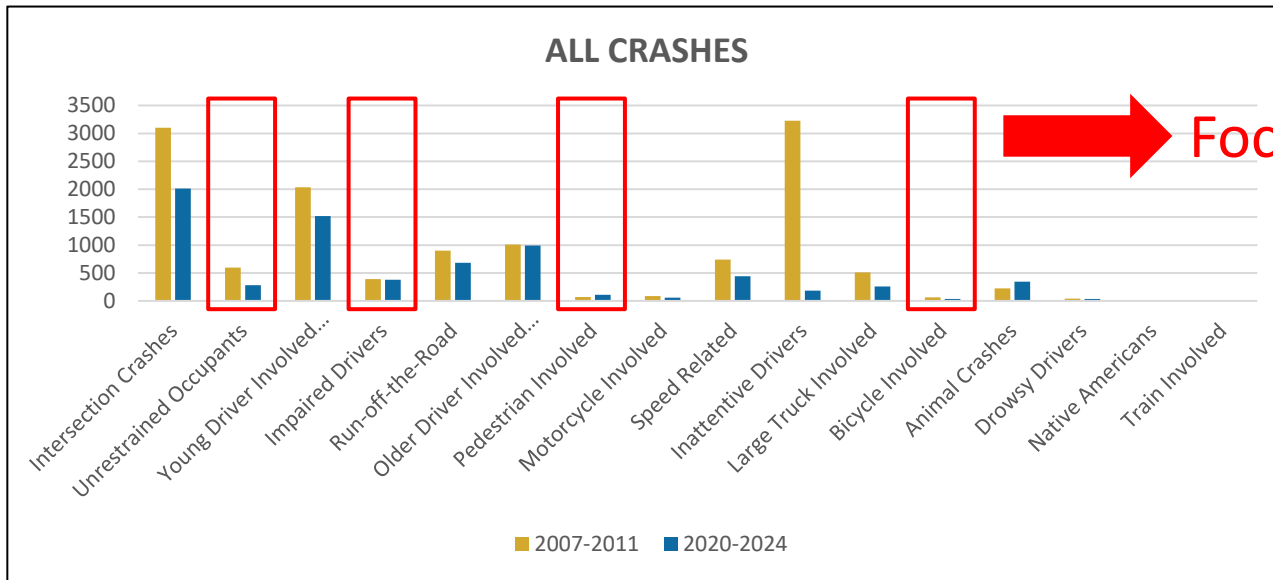
**Impaired Drivers:** 5 Fatalities 30 Serious Injuries 376 Crashes

**Inattentive Drivers:** 0 Fatalities 8 Serious Injuries 182 Crashes

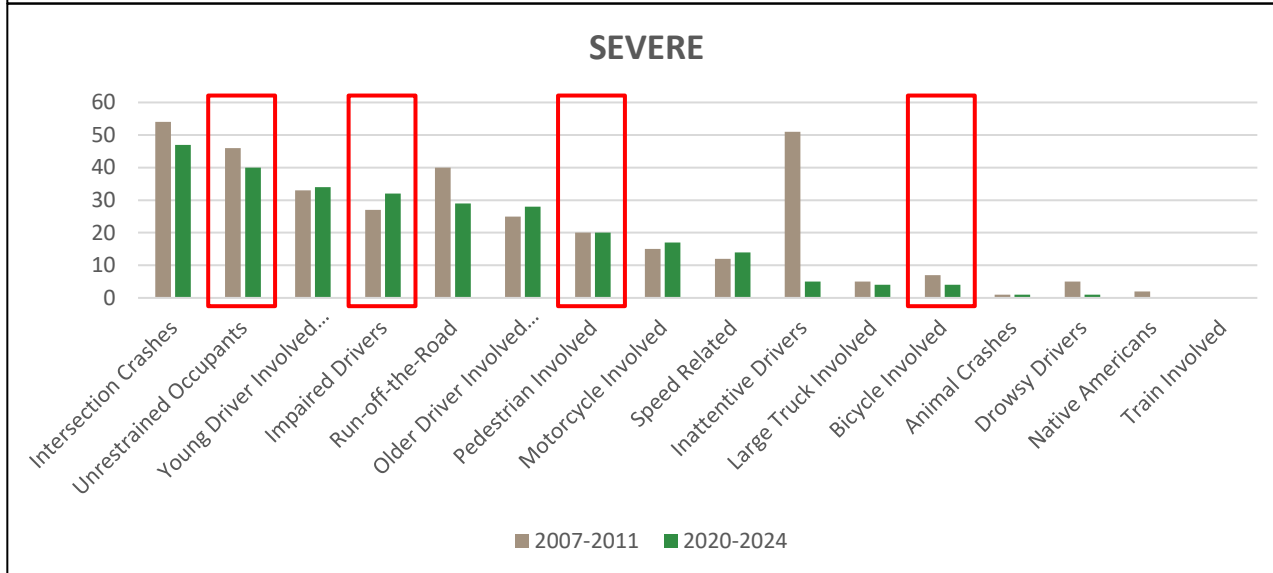
**Speed Related Crashes:** 4 Fatalities 11 Serious Injuries 442 Crashes



# Focus Areas - Recap



Focus Areas for 2013 CTSP

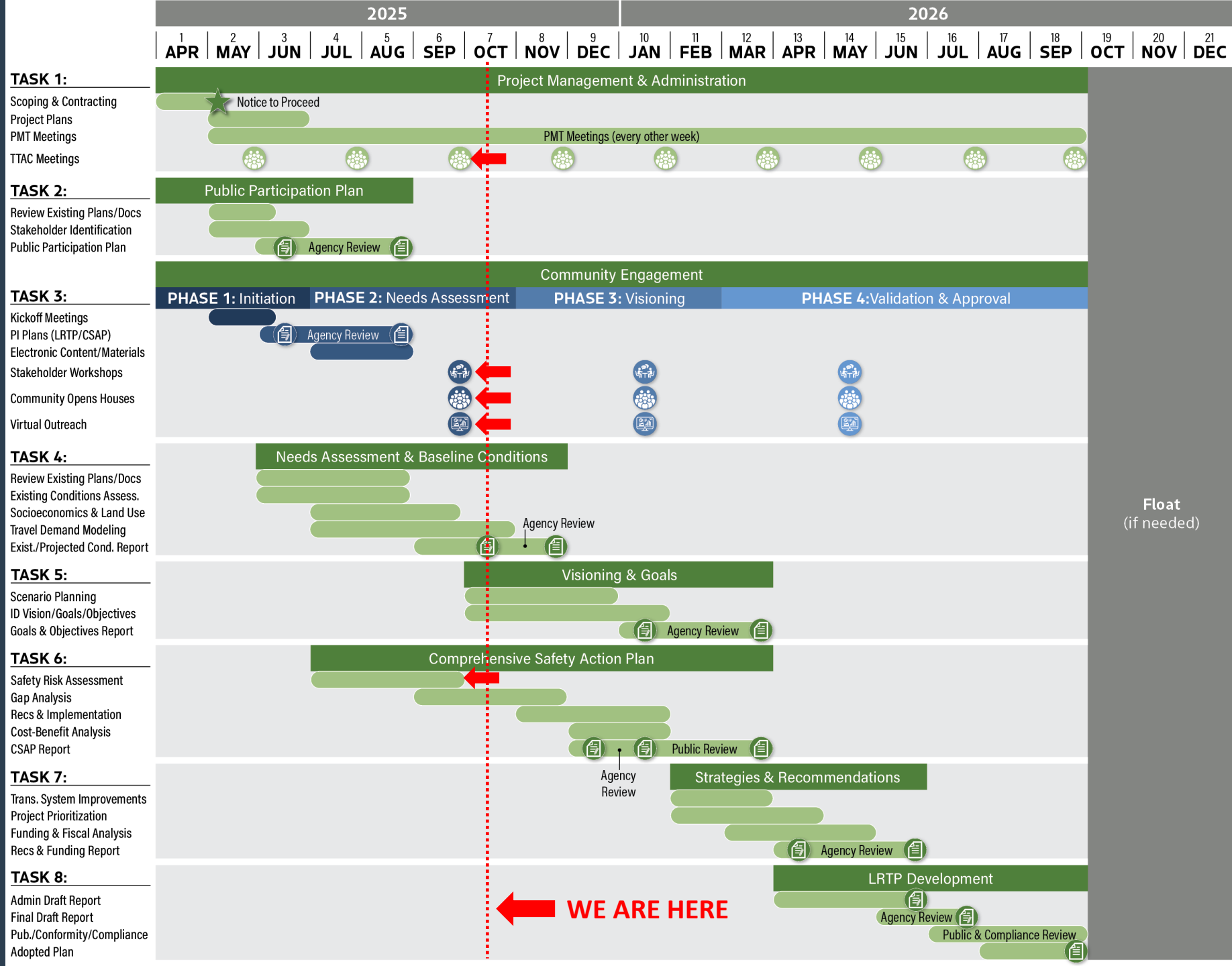


## Proposed Focus Areas for CSAP:

1. **Intersection Crashes** (*urban focus*)
2. **Run off the Road Crashes** (*rural focus*)
3. **Non-Motorized Users** (*multimodal focus*)
4. **High Risk Behaviors** (*behavioral based*)
  - a) Impaired Drivers
  - b) Unrestrained Occupants
  - c) Inattentive Drivers
  - d) Speed-Related Crashes

*\*Incorporate age-based strategies as appropriate\**

# Schedule



Float  
(if needed)

← WE ARE HERE

# Next Steps

- Public & Stakeholder Outreach
  - October 1 - 31
- Land Use Forecasting Workshop
- Data Collection
- Next TTAC Meeting:
  - PI Recap
  - Additional Baseline Conditions Assessment



# Memorandum

<b>To:</b>	Greater Helena Area MPO Transportation Technical Advisory Committee
<b>From:</b>	Ty Weingartner, MPO Manager
<b>Subject:</b>	Transportation Alternative Funding
<b>Meeting Date:</b>	October 20, 2025
<b>Agenda Item Type:</b>	Transportation Alternative Funding
<b>Background:</b>	<p>The MPO Manager presented the results of the TTAC's subcommittee scoring for the three applications submitted for Transportation Alternative Funds. Members of the TTAC expressed a need for more information regarding the following points:</p> <ol style="list-style-type: none"><li>1. Additional details on the proposed projects associated with each Transportation Alternative Funding application received.</li><li>2. Clarification of the scoring criteria and the scores awarded by the subcommittee.</li><li>3. Guidance for applicants on how to improve their submissions for the next application cycle</li><li>4. Concerns were raised regarding a previous TTAC decision to allocate a portion of the funding for "Preservation Projects."</li><li>5. Questions about the distinction between a Preservation Project and a Maintenance Project.</li><li>6. Suggestions for improving the Transportation Alternative process for the Greater Helena MPO.</li></ol>
<b>TTAC Requested Information Follow-Up</b>	<ol style="list-style-type: none"><li>1. A detailed summary of the applications received for Transportation Alternative Funding has been added as page 4 of this document.</li><li>2. The criteria for scoring the applications and the assigned scores from the scoring committee are also included on TA Scoring Summary page.</li></ol>

	<p>3. Applicants may reach out after the announcement of awards to discuss areas for improvement in future submissions.</p> <p>4. The MPO Manager reviewed the TTAC meetings held on March 17, 2025, April 24, 2025, and July 21, 2025, where Transportation Alternative Funds were discussed. It was noted that no decisions were made during these sessions regarding the creation of a separate award for Preservation Projects or the allocation percentages for these awards. It is important to emphasize that the TTAC has the authority to include a separate award for the MPO's Transportation Alternatives process moving forward.</p> <p>5. What is Preservation?</p> <ul style="list-style-type: none"><li>a. Preservation consists of work that is planned and performed to improve or sustain the condition of the transportation facility in a state of good repair. Preservation activities generally do not add capacity or structural value, but do restore the overall condition of the transportation facility.</li></ul> <p>What is Maintenance?</p> <ul style="list-style-type: none"><li>a. Maintenance describes work that is performed to maintain the condition of the transportation system or to respond to specific conditions or events that restore the highway system to a functional state of operation. Maintenance is a critical component of an agencies asset management plan that is comprised of both routine and preventive maintenance.</li></ul> <p><a href="https://www.fhwa.dot.gov/preservation/memos/160225.cfm">https://www.fhwa.dot.gov/preservation/memos/160225.cfm</a></p> <p>6. Plan for Next TA Round</p> <ul style="list-style-type: none"><li>a. Improve application/criteria/process considerations<ul style="list-style-type: none"><li>i. Add request for minimum amount sponsor would accept</li><li>ii. Consider max/min award amounts</li><li>iii. Can consider a preservation set-aside</li><li>iv. General description to be made public</li><li>v. Is the Project Sponsor able to administer the project on their own</li><li>vi. Make clearer in the project readiness section that project is still required to go after a competitive bid.</li></ul></li></ul>
--	--



# GREATER HELENA MPO TA SCORING SUMMARY

Scoring Criteria	
Project Description	10 Points
Project Benefits	40 Points
Operation and Maintenance Plan	10 Points
Project Readiness	40 Points
<b>Transportation Alternative Funding Applications</b>	
<b>East Helena Public Schools Safe Route to East Valley Middle School</b>	
<b>Project Summary</b>	East Helena Public Schools (EHPS) is proposing the construction of new 5-foot-wide concrete sidewalks and safe pedestrian crossings in East Helena to enhance safety and traffic flow. The project aims to improve walkable access to East Valley Middle School (EVMS), benefiting nearly 500 students who currently lack sidewalk connectivity. It will also support local residents, including those from the growing Prickly Pear Subdivision, and improve access to businesses and parks. Additionally, the project aligns with a vision for a regional “greenway” promoting safe, non-motorized travel across communities.
<b>Breakout of TA Requested Funding for East Helena Public Schools</b>	
Total Project Cost	\$669,656.16
TA Federal Share	\$579,788.30
Local Match	\$89,867.86
<b>Average Evaluated Score for East Helena Public Schools</b>	
Project Description	9.4
Project Benefits	37.6
Operation and Maintenance Plan	7.2
Project Readiness	35.8
<b>Total</b>	<b>90</b>
<b>City of Helena Safe Routes to School – ADA Ramp Improvement Project</b>	
<b>Project Summary</b>	<p>The City of Helena aims to enhance ADA accessibility at key intersections along school routes to improve pedestrian access, connectivity, and safety. The project includes the installation of 202 individual ramps and 225 total improvements to existing sidewalks and walkways near schools, addressing the need for better accessibility from residential areas to educational facilities.</p> <p>The list of schools involved in this project includes:</p> <ul style="list-style-type: none"> <li>• Kessler Elementary</li> <li>• Four Georgians Elementary</li> <li>• Bryant Elementary</li> <li>• Central School</li> <li>• Jefferson Elementary</li> <li>• Smith Elementary</li> <li>• Helena Middle School</li> <li>• Capital High School</li> </ul>

	<ul style="list-style-type: none"> <li>• Helena High School</li> <li>• Broadwater to CRA</li> </ul>
<b>Breakout of TA Requested Funding for the City of Helena</b>	
Total Project Cost	\$1,296,239.67
TA Federal Share	\$1,122,284.31
Local Match	\$173,955.36
<b>Average Evaluated Score for City of Helena</b>	
Project Description	9.2
Project Benefits	36.4
Operation and Maintenance Plan	8
Project Readiness	34
<b>Total</b>	<b>87.6</b>
<b>Lewis and Clark County – Lincoln Rd. N Montana Ave. Path Maintenance and Improvements</b>	
<b>Project Summary</b>	<p>The County is seeking funding from the Transportation Alternatives (TA) Program to improve the North Montana Avenue/Lincoln Road Trail, which was originally constructed under the Community Transportation Enhancement Program (CTEP). The primary objectives are to enhance safety, address ADA (Americans with Disabilities Act) concerns, and strengthen non-motorized transportation infrastructure for the community. The project includes the following tasks:</p> <ul style="list-style-type: none"> <li>- Maintenance and minor reconstruction of the asphalt trail from Applegate Drive to North Montana Avenue.</li> <li>- Activities such as vegetation removal, crack sealing, seal coating, upgrading ADA accessibility, and the installation of pedestrian crossing signage along with Rectangular Rapid Flashing Beacons (RRFBs).</li> <li>- Upgrading a 4-foot-wide gravel trail segment from Lucchese Road to Ropers Road into an 8-foot-wide paved shared-use path.</li> </ul>
<b>Breakout of TA Requested Funding for the City of Helena</b>	
Total Project Cost	\$550,829.00
TA Federal Share	\$476,907.00
Local Match	\$73,922.00
<b>Average Evaluated Score for Lewis and Clark County</b>	
Project Description	9
Project Benefits	29.8
Operations and Maintenance Plan	7
Project Readiness	33.6
<b>Total</b>	<b>79.4</b>
<b>Average Evaluation Score Summary</b>	
East Helena Public Schools	90
City of Helena	87.6
Lewis and Clark County	79.4
<b>Scoring Committee Recommendation</b>	

The Scoring Committee found that all three applications had merit. They expressed a desire to award a percentage of the available Transportation Alternative Funds to each applicant. However, during their deliberations, the committee determined that the MPO didn't have policies in place for partial awards. Conversations with other MPOs revealed that partial awards are rarely, if ever, granted.

The committee concluded that without knowing whether awarding a specific percentage to an applicant would contribute meaningfully to their project, attempting to assign a specific amount could lead to additional complications. As a result, the Subcommittee recommends that the TTAC award the top-scoring applicant, East Helena Public Schools, the full amount of \$581,600.23 and carry over the remaining balance of \$768,232.77.

The Subcommittee would like the Transportation Technical Advisory Committee (TTAC) to consider options for allocating the remaining Transportation Alternatives (TA) Funds between the two other applicants to enhance transportation alternatives in the Greater Helena Metropolitan Planning Organization (MPO). Additionally, the Subcommittee suggests that the TTAC improve the TA Funds process to ensure fairness and transparency.

<b>Greater Helena MPO Available TA Funds</b>	<b>\$1,349,833.00</b>
<b>Suggested Award to East Helena Public Schools</b>	<b>\$579,788.30</b>
<b>Recommend TA Sharing Between City of Helena and Lewis and Clark County</b>	<b>\$770,044.7</b>